

For Research Use Only

# CoraLite®594-conjugated IgG Kappa chain Monoclonal antibody



Catalog Number:CL594-67761

## Basic Information

Catalog Number:

CL594-67761

Size:

1000 µg/ml

Source:

Mouse

Isotype:

IgG1

GenBank Accession Number:

GeneID (NCBI):

Full Name:

Calculated MW:

155 kDa

Observed MW:

~25 kDa

Purification Method:

Protein G purification

CloneNo.:

4D11F7

Recommended Dilutions:

IF 1:50-1:500

Excitation/Emission maxima wavelengths:

588 nm / 604 nm

## Applications

Tested Applications:

IF-P

Species Specificity:

Human

Positive Controls:

IF : human tonsillitis tissue,

## Background Information

This antibody detects the Kappa chain of human IgG,

## Storage

Storage:

Store at -20°C. Avoid exposure to light.

Storage Buffer:

PBS with 50% Glycerol, 0.05% Proclin300, 0.5% BSA, pH 7.3.

Aliquoting is unnecessary for -20°C storage

For technical support and original validation data for this product please contact:

T: 4006900926

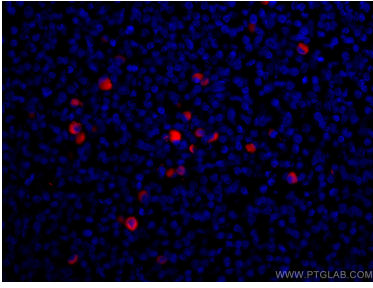
E: [Proteintech-CN@ptglab.com](mailto:Proteintech-CN@ptglab.com)

W: [ptgcn.com](http://ptgcn.com)

This product is exclusively available under Proteintech Group brand and is not available to purchase from any other manufacturer.

---

## Selected Validation Data



Immunofluorescent analysis of (4% PFA) fixed human tonsillitis tissue using CoraLite®594 Human IgG Kappa chain antibody (CL594-67761, Clone: 4D11F7) at dilution of 1:200.