

For Research Use Only

# CoraLite®594-conjugated METTL3 Monoclonal antibody



Catalog Number: CL594-67733

Featured Product

## Basic Information

Catalog Number:

CL594-67733

Size:

1000 µg/ml

Source:

Mouse

Isotype:

IgG1

Immunogen Catalog Number:

AG7110

GenBank Accession Number:

BC001650

GeneID (NCBI):

56339

UNIPROT ID:

Q86U44

Full Name:

methyltransferase like 3

Calculated MW:

64 kDa

Observed MW:

65-70 kDa

Purification Method:

Protein G purification

CloneNo.:

2D8H1

Recommended Dilutions:

IF 1:200-1:800

Excitation/Emission maxima

wavelengths:

588 nm / 604 nm

## Applications

Tested Applications:

FC (Intra), IF-P

Species Specificity:

Human, Mouse

Positive Controls:

IF : mouse testis tissue,

## Background Information

METTL3 is a key S-adenosyl-L-methionine-binding subunit, which is component of a complex multicomponent enzyme that catalyzes the methylation of internal adenosine residues in eukaryotic mRNA, forming N6-methyladenosine. It contains 2 putative nuclear localization signals and 2 consensus methylation motifs. The calculated molecular weight of METTL3 is 64 kDa, but modified METTL3 is about 65-70 kDa.

## Storage

Storage:

Store at -20°C. Avoid exposure to light. Stable for one year after shipment.

Storage Buffer:

PBS with 50% Glycerol, 0.05% Proclin300, 0.5% BSA, pH 7.3.

Aliquoting is unnecessary for -20°C storage

For technical support and original validation data for this product please contact:

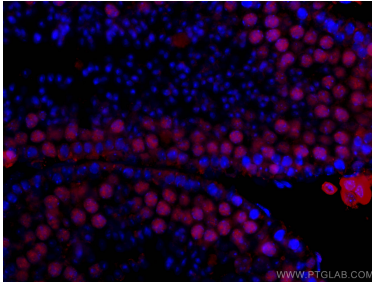
T: 4006900926

E: [Proteintech-CN@ptglab.com](mailto:Proteintech-CN@ptglab.com)

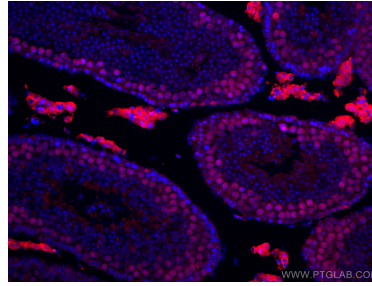
W: [ptgcn.com](http://ptgcn.com)

This product is exclusively available under Proteintech Group brand and is not available to purchase from any other manufacturer.

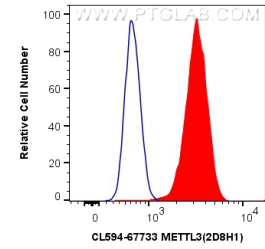
## Selected Validation Data



Immunofluorescent analysis of (4% PFA) fixed mouse testis tissue using CoraLite®594 METTL3 antibody (CL594-67733, Clone: 2D8H1) at dilution of 1:400.



Immunofluorescent analysis of (4% PFA) fixed mouse testis tissue using CoraLite®594 METTL3 antibody (CL594-67733, Clone: 2D8H1) at dilution of 1:400.



1X10<sup>6</sup> HEK-293 cells were intracellularly stained with 0.8 ug CoraLite®594 Anti-Human METTL3 (CL594-67733, Clone:2D8H1) (red), or 0.8 ug CoraLite®594 Mouse IgG1 Isotype Control (MOPC-21) (CL594-65124, Clone: MOPC-21) (blue). Cells were fixed and permeabilized with Transcription Factor Staining Buffer Kit (PF00011).