

For Research Use Only

CoraLite®594-conjugated RPL6 Monoclonal antibody



Catalog Number:CL594-67729

Basic Information

Catalog Number: CL594-67729	GenBank Accession Number: BC004138	Purification Method: Antigen affinity purification
Size: 1000 µg/ml	GeneID (NCBI): 6128	CloneNo.: 3F6F8
Source: Mouse	UNIPROT ID: Q02878	Recommended Dilutions: IF 1:50-1:500
Isotype: IgG1	Full Name: ribosomal protein L6	Excitation/Emission maxima wavelengths: 588 nm / 604 nm
Immunogen Catalog Number: AG6840	Calculated MW: 33 kDa	
	Observed MW: 34 kDa	

Applications

Tested Applications: IF/ICC	Positive Controls: IF : HepG2 cells,
Species Specificity: Human, mouse, rat	

Background Information

Ribosomes are large multiple protein complexes which is composed of more than 80 components and provide a protein-synthesizing machinery for all living cells. Ribosomal protein like 6 (RPL6, also called Taxreb107 for Tax responsive element binding protein 107), one of the ribosomal components, can bind with the Tax responsive element of human T cell leukemia virus (HTLV)-I in addition to be assembled to ribosomes [PMID:12031506]. Overexpressed in gastric cancer could promote cell growth and cell cycle progression at least through upregulating cyclin E expression[PMID:20171175].

Storage

Storage:
Store at -20°C. Avoid exposure to light. Stable for one year after shipment.
Storage Buffer:
PBS with 50% Glycerol, 0.05% Proclin300, 0.5% BSA, pH 7.3.
Aliquoting is unnecessary for -20°C storage

For technical support and original validation data for this product please contact:

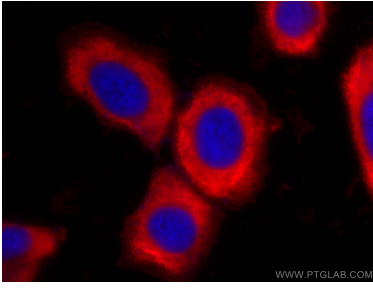
T: 4006900926

E: Proteintech-CN@ptglab.com

W: ptgcn.com

This product is exclusively available under Proteintech Group brand and is not available to purchase from any other manufacturer.

Selected Validation Data



Immunofluorescent analysis of (-20°C Ethanol) fixed HepG2 cells using CoraLite®594 RPL6 antibody (CL594-67729, Clone: 3F6F8) at dilution of 1:200.