

For Research Use Only

# CoraLite®594-conjugated ATG4B Monoclonal antibody



Catalog Number:CL594-67727

## Basic Information

Catalog Number: CL594-67727	GenBank Accession Number: BC000719	Purification Method: Protein A purification
Size: 1000 µg/ml	GeneID (NCBI): 23192	CloneNo.: 1G5A7
Source: Mouse	UNIPROT ID: Q9Y4P1	Recommended Dilutions: IF/ICC 1:50-1:500
Isotype: IgG2a	Full Name: ATG4 autophagy related 4 homolog B (S. cerevisiae)	Excitation/Emission maxima wavelengths: 588 nm / 604 nm
Immunogen Catalog Number: AG30510	Calculated MW: 44 kDa	
	Observed MW: 44 kDa	

## Applications

Tested Applications: IF/ICC	Positive Controls: IF/ICC : HeLa cells,
Species Specificity: Human, mouse, rat	

## Background Information

ATG4B (autophagy 4) is also named as APG4B, AUTL1, KIAA0943 and belongs to the peptidase C54 family. It is a homolog of yeast Apg4, a cysteine protease involved in autophagy and is a cytoplasmic enzyme. This protein is highly expressed in skeletal muscle, with lower expression in heart, liver, and pancreas and no expression is detected in fetal tissues by the northern blot. ATG4B is widely expressed in tumor cell lines (PMID:12446702). It has some isoforms produced by alternative splicing with molecular mass of 31-52 kDa.

## Storage

**Storage:**  
Store at -20°C. Avoid exposure to light.  
**Storage Buffer:**  
PBS with 50% Glycerol, 0.05% Proclin300, 0.5% BSA, pH 7.3.  
Aliquoting is unnecessary for -20°C storage

For technical support and original validation data for this product please contact:

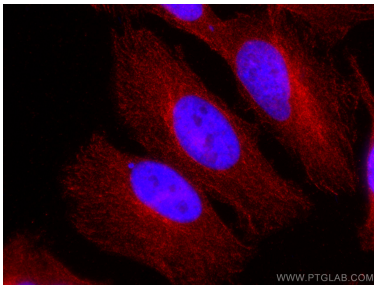
T: 4006900926

E: [Proteintech-CN@ptglab.com](mailto:Proteintech-CN@ptglab.com)

W: [ptgcn.com](http://ptgcn.com)

This product is exclusively available under Proteintech Group brand and is not available to purchase from any other manufacturer.

## Selected Validation Data



Immunofluorescent analysis of (4% PFA) fixed HeLa cells using Coralite®594 ATG4B antibody (CL594-67727, Clone: 1G5A7) at dilution of 1:200.