

For Research Use Only

CoraLite®594-conjugated LRPPRC Monoclonal antibody



Catalog Number:CL594-67679

Basic Information

Catalog Number: CL594-67679	GenBank Accession Number: BC050311	Purification Method: Protein A purification
Size: 1000 µg/ml	GeneID (NCBI): 10128	CloneNo.: 3H7E1
Source: Mouse	UNIPROT ID: P42704	Recommended Dilutions: IF 1:50-1:500
Isotype: IgG2b	Full Name: leucine-rich PPR-motif containing	Excitation/Emission maxima wavelengths: 588 nm / 604 nm
Immunogen Catalog Number: AG30261	Calculated MW: 1394 aa, 158 kDa	
	Observed MW: 130 kDa	

Applications

Tested Applications: IF/ICC	Positive Controls: IF : HEK-293 cells,
Species Specificity: Human	

Background Information

LRPPRC (also called LRP130 or GP130) is a 130-kDa RNA-binding protein of the pentatricopeptide repeat family. LRPPRC localizes primarily to the mitochondria where it binds to poly(A) mRNA. It plays a role in translation or stability of mitochondrially encoded cytochrome c oxidase (COX) subunits. LRPPRC has also been shown to regulate nuclear gene transcription and to bind specific RNA molecules in both the nucleus and the cytoplasm. Mutations in LRPPRC gene are associated with the French-Canadian type of Leigh syndrome.

Storage

Storage:
Store at -20°C. Avoid exposure to light.
Storage Buffer:
PBS with 50% Glycerol, 0.05% Proclin300, 0.5% BSA, pH 7.3.
Aliquoting is unnecessary for -20°C storage

For technical support and original validation data for this product please contact:

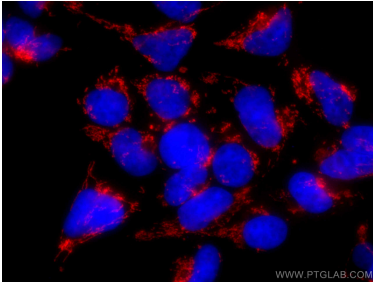
T: 4006900926

E: Proteintech-CN@ptglab.com

W: ptgcn.com

This product is exclusively available under Proteintech Group brand and is not available to purchase from any other manufacturer.

Selected Validation Data



Immunofluorescent analysis of (4% PFA) fixed HEK-293 cells using CoraLite@594 LRPPRC antibody (CL594-67679, Clone: 3H7E1) at dilution of 1:200.