

CoraLite®594-conjugated Ins1 Monoclonal antibody

Catalog Number: **CL594-67668**

Basic Information

Catalog Number: CL594-67668	GenBank Accession Number: NM_008386	Purification Method: Protein G purification
Size: 1000 µg/ml	GeneID (NCBI): 16333	CloneNo.: 1H2C11
Source: Mouse	UNIPROT ID: P01325	Recommended Dilutions: IF-P 1:150-1:600
Isotype: IgG1	Full Name: insulin I	Excitation/Emission maxima wavelengths: 588 nm / 604 nm
Immunogen Catalog Number: AG29988	Calculated MW: 12 kDa	

Applications

Tested Applications: IF-P	Positive Controls: IF-P : mouse pancreas tissue,
Species Specificity: mouse, rat	

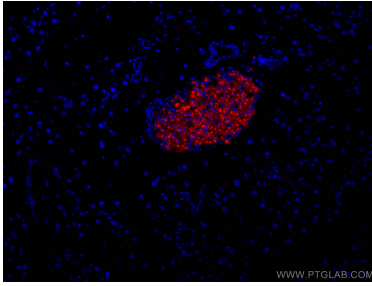
Background Information

insulin I is a peptide hormone that plays a vital role in the regulation of carbohydrate and lipid metabolism. The encoded precursor protein undergoes proteolytic cleavage to produce a disulfide-linked heterodimeric functional protein that is stored in secretory granules. An increase in blood glucose levels, among others, induces the release of insulin from the secretory granules. Mice deficient in the functional hormone encoded by this gene develop diabetes mellitus.

Storage

Storage:
Store at -20°C. Avoid exposure to light.
Storage Buffer:
PBS with 50% Glycerol, 0.05% Proclin300, 0.5% BSA, pH 7.3.
Aliquoting is unnecessary for -20°C storage

Selected Validation Data



Immunofluorescent analysis of (4% PFA) fixed mouse pancreas tissue using Coralite®594-conjugated Ins1 antibody (CL594-67668, Clone: 1H2C11) at dilution of 1:300.