

For Research Use Only

CoraLite® Plus 594-conjugated ETFA Monoclonal antibody

Catalog Number:CL594-67661



Basic Information

Catalog Number:

CL594-67661

Source:

Mouse

Isotype:

IgG2a

Immunogen Catalog Number:

AG30257

GenBank Accession Number:

BC015526

GeneID (NCBI):

2108

UNIPROT ID:

P13804

Full Name:

electron-transfer-flavoprotein, alpha polypeptide

Calculated MW:

30 kDa

Observed MW:

30 kDa

Purification Method:

Protein A purification

CloneNo.:

3C12G5

Recommended Dilutions:

IF/ICC: 1:200-1:800

Excitation/Emission maxima wavelengths:

588 nm / 604 nm

Applications

Tested Applications:

IF/ICC

Species Specificity:

human, mouse, rat, pig

Positive Controls:

IF/ICC : HeLa cells,

Background Information

The electron transfer flavoprotein(ETF), located in the mitochondrial matrix, is a nuclear-encoded enzyme delivering to the respiratory chain by straight-chain acyl-CoA dehydrogenases and other dehydrogenases. Mitochondrial fatty acids oxidation and amino acids metabolism are affected in MADD(Multiple acyl-CoA dehydrogenase deficiency). These disorders are linked to a dysfunction of ETF. ETF is a mitochondrial matrix protein consisting of alpha- (30kDa) and beta- (28kDa) subunits encoded by the ETFA and ETFB genes, respectively. (PMID: 31996215,PMID: 16510302)

Storage

Storage:

Store at -20°C. Avoid exposure to light. Stable for one year after shipment.

Storage Buffer:

PBS with 50% glycerol, 0.05% Proclin300, 0.5% BSA, pH7.3

Aliquoting is unnecessary for -20°C storage

For technical support and original validation data for this product please contact:

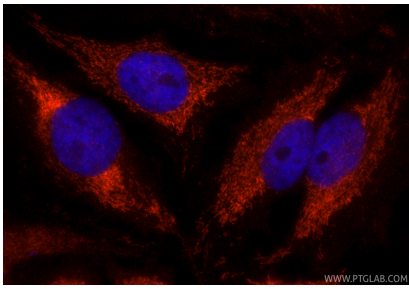
T: 4006900926

E: Proteintech-CN@ptglab.com

W: ptgcn.com

This product is exclusively available under Proteintech Group brand and is not available to purchase from any other manufacturer.

Selected Validation Data



Immunofluorescent analysis of (4% PFA) fixed HeLa cells using Coralite® Plus 594 ETFA antibody (CL594-67661, Clone: 3C12G5) at dilution of 1:400.