

For Research Use Only

CoraLite®594-conjugated EEF2 Monoclonal antibody

Catalog Number: CL594-67550



Basic Information

Catalog Number:

CL594-67550

Source:

Mouse

Isotype:

IgG1

Immunogen Catalog Number:

AG13859

GenBank Accession Number:

BC126259

GeneID (NCBI):

1938

UNIPROT ID:

P13639

Full Name:

eukaryotic translation elongation
factor 2

Calculated MW:

858 aa, 95 kDa

Purification Method:

Protein G purification

CloneNo.:

1E4D5

Recommended Dilutions:

IF/ICC: 1:50-1:500

FC (Intra): 0.20 ug per 10⁶ cells in a
100 µl suspension

Excitation/Emission maxima
wavelengths:

588 nm / 604 nm

Applications

Tested Applications:

IF/ICC, FC (Intra)

Species Specificity:

human, mouse, rat

Positive Controls:

IF/ICC : HepG2 cells,

FC (Intra) : HeLa cells,

Background Information

Storage

Storage:

Store at -20°C. Avoid exposure to light. Stable for one year after shipment.

Storage Buffer:

PBS with 50% glycerol, 0.05% Proclin300, 0.5% BSA, pH7.3

Aliquoting is unnecessary for -20°C storage

For technical support and original validation data for this product please contact:

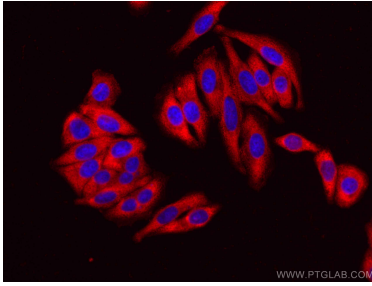
T: 4006900926

E: Proteintech-CN@ptglab.com

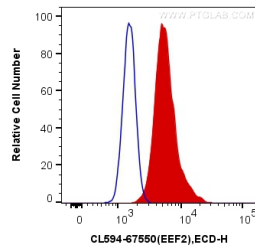
W: ptgcn.com

This product is exclusively available under Proteintech Group brand and is not available to purchase from any other manufacturer.

Selected Validation Data



Immunofluorescent analysis of (-20°C Ethanol) fixed HepG2 cells using CoraLite®594 EEF2 antibody (CL594-67550, Clone: 1E4D5) at dilution of 1:200.



1x10⁶ HeLa cells were intracellularly stained with 0.2 ug CoraLite®594-conjugated EEF2 Monoclonal antibody (CL594-67550, Clone:1E4D5)(red), or 0.2 ug Mouse IgG1 Isotype Control (CL594-66360, Clone: T1F8D3F10) (blue). Cells were fixed with 4% PFA and permeabilized with Flow Cytometry Perm Buffer.