

# CoraLite®594-conjugated IPO4 Monoclonal antibody

Catalog Number: **CL594-67549**

## Basic Information

**Catalog Number:**

CL594-67549

**Size:**

1000 µg/ml

**Source:**

Mouse

**Isotype:**

IgG1

**Immunogen Catalog Number:**

AG2281

**GenBank Accession Number:**

BC003690

**GeneID (NCBI):**

79711

**UNIPROT ID:**

Q8TEX9

**Full Name:**

importin 4

**Calculated MW:**

1081 aa, 118 kDa

**Observed MW:**

120 kDa

**Purification Method:**

Protein G purification

**CloneNo.:**

2F3H2

**Recommended Dilutions:**

IF/ICC 1:50-1:500

**Excitation/Emission maxima wavelengths:**

588 nm / 604 nm

## Applications

**Tested Applications:**

IF/ICC

**Species Specificity:**

Human

**Positive Controls:**

IF/ICC : MCF-7 cells,

## Background Information

Importin - 4 (IPO4) belongs to the importin β family which directs the cargo to pass through the nuclear pore complex via transient interaction with nucleoporins. IPO4 is responsible for transporting histones H3 and H4 into the nucleus for chromatin assembly. Recently IPO4 has been reported to contribute to gastric cancer progression and poor prognosis.

## Storage

**Storage:**

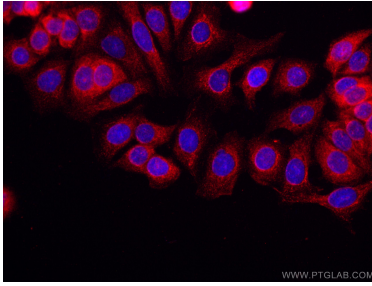
Store at -20°C. Avoid exposure to light.

**Storage Buffer:**

PBS with 50% Glycerol, 0.05% Proclin300, 0.5% BSA, pH 7.3.

Aliquoting is unnecessary for -20°C storage

## Selected Validation Data



Immunofluorescent analysis of (-20°C Ethanol) fixed MCF-7 cells using CoraLite®594 IPO4 antibody (CL594-67549, Clone: 2F3H2 ) at dilution of 1:100.