

For Research Use Only

# CoraLite®594-conjugated MYL4 Monoclonal antibody



Catalog Number:CL594-67533

## Basic Information

Catalog Number:

CL594-67533

Size:

1000 µg/ml

Source:

Mouse

Isotype:

IgG2b

Immunogen Catalog Number:

AG19244

GenBank Accession Number:

BC030228

GeneID (NCBI):

4635

UNIPROT ID:

P12829

Full Name:

myosin, light chain 4, alkali; atrial,  
embryonic

Calculated MW:

197 aa, 22 kDa

Observed MW:

22-25 kDa

Purification Method:

Protein A purification

CloneNo.:

2F5C1

Recommended Dilutions:

IF-P 1:50-1:500

Excitation/Emission maxima  
wavelengths:

588 nm / 604 nm

## Applications

Tested Applications:

IF-P

Species Specificity:

Human, mouse, rat, pig

Positive Controls:

IF-P: mouse heart tissue,

## Background Information

Myosin light - chain 4 (MYL4) encodes an essential myosin light chain that is expressed in embryonic whole heart and skeletal muscle. It is specifically expressed in human atria after birth. MYL4 is essential for atrial electrical, functional, and structural integrity, and MYL4 dysfunction can produce severe inherited atrial cardiomyopathy.

## Storage

Storage:

Store at -20°C. Avoid exposure to light.

Storage Buffer:

PBS with 50% Glycerol, 0.05% Proclin300, 0.5% BSA, pH 7.3.

Aliquoting is unnecessary for -20°C storage

For technical support and original validation data for this product please contact:

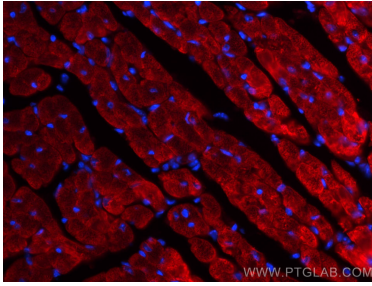
T: 4006900926

E: [Proteintech-CN@ptglab.com](mailto:Proteintech-CN@ptglab.com)

W: [ptgcn.com](http://ptgcn.com)

This product is exclusively available under Proteintech Group brand and is not available to purchase from any other manufacturer.

## Selected Validation Data



Immunofluorescent analysis of (4% PFA) fixed mouse heart tissue using CoraLite® 594 MYL4 antibody (CL594-67533, Clone: 2F5C1) at dilution of 1:100.