

CoraLite®594-conjugated PLCL2 Monoclonal antibody

Catalog Number: **CL594-67471**

Basic Information

Catalog Number:

CL594-67471

Size:

1000 µg/ml

Source:

Mouse

Isotype:

IgG1

Immunogen Catalog Number:

AG11461

GenBank Accession Number:

BC036392

GeneID (NCBI):

23228

UNIPROT ID:

Q9UPRO

Full Name:

phospholipase C-like 2

Calculated MW:

126 kDa

Observed MW:

126 kDa

Purification Method:

Protein G purification

CloneNo.:

1C8A4

Recommended Dilutions:

IF/ICC 1:50-1:500

**Excitation/Emission maxima
wavelengths:**

588 nm / 604 nm

Applications

Tested Applications:

IF/ICC

Species Specificity:

Human, Rat, Mouse, Pig

Positive Controls:

IF/ICC : HepG2 cells,

Background Information

PLCL2, a novel phospholipase C-like protein, is expressed in lymphocytes and platelets. The expression of PLCL2 is associated with the proliferation of mature B cells in the immune system. PLCL2 is a new susceptibility loci for myocardial infarction. It has been shown that PLCL2 plays a key role in the pathogenesis of atherosclerosis and systemic sclerosis. There are three isoforms of PLCL2 protein and 67471-1-Ig antibody detects the 126 kDa band in SDS-PAGE. (PMID: 24916648, 25880423)

Storage

Storage:

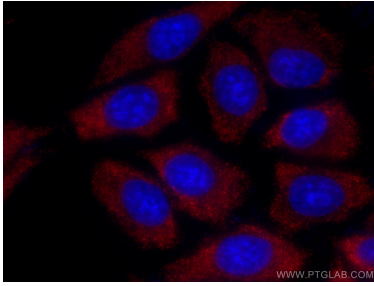
Store at -20°C. Avoid exposure to light. Stable for one year after shipment.

Storage Buffer:

PBS with 50% Glycerol, 0.05% Proclin300, 0.5% BSA, pH 7.3.

Aliquoting is unnecessary for -20°C storage

Selected Validation Data



Immunofluorescent analysis of (-20°C Methanol) fixed HepG2 cells using CoraLite®594 PLCL2 antibody (CL594-67471, Clone: 1C8A4) at dilution of 1:200.