

For Research Use Only

CoraLite®594-conjugated Sam50 Monoclonal antibody



Catalog Number:CL594-67425

Basic Information

Catalog Number: CL594-67425	GenBank Accession Number: BC007830	Purification Method: Protein G purification
Size: 1000 µg/ml	GeneID (NCBI): 25813	CloneNo.: 2H6H9
Source: Mouse	UNIPROT ID: Q9Y512	Recommended Dilutions: IF 1:50-1:500
Isotype: IgG1	Full Name: sorting and assembly machinery component 50 homolog (S. cerevisiae)	Excitation/Emission maxima wavelengths: 588 nm / 604 nm
Immunogen Catalog Number: AG15155	Calculated MW: 469 aa, 52 kDa	
	Observed MW: 52 kDa	

Applications

Tested Applications: IF/ICC	Positive Controls: IF : HepG2 cells,
Species Specificity: Human, Pig, Rat, Mouse	

Background Information

Sam50, encoded by the SAMM50 gene, is an essential protein of the mitochondrial outer membrane (OMM). It contains a beta-barrel domain conserved from bacteria to man (PMID: 14570913). Sam50 is a part of the sorting and assembly machinery (SAM) necessary for the assembly of beta-barrel proteins in the OMM (PMID: 22252321). It is crucial for maintaining mitochondrial shape, morphology of mitochondrial cristae, and assembly of the mitochondrial respiratory chain complexes (PMID: 26587038; 22252321; 25781180). Polymorphisms in the SAMM50 gene have been associated with development and progression of nonalcoholic fatty liver disease (PMID: 23535911).

Storage

Storage:
Store at -20°C. Avoid exposure to light.
Storage Buffer:
PBS with 50% Glycerol, 0.05% Proclin300, 0.5% BSA, pH 7.3.
Aliquoting is unnecessary for -20°C storage

For technical support and original validation data for this product please contact:

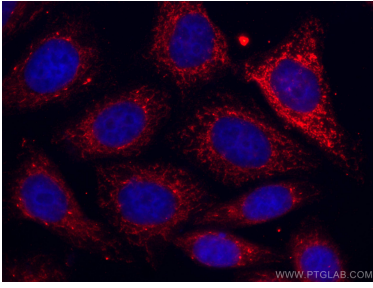
T: 4006900926

E: Proteintech-CN@ptglab.com

W: ptgcn.com

This product is exclusively available under Proteintech Group brand and is not available to purchase from any other manufacturer.

Selected Validation Data



Immunofluorescent analysis of (4% PFA) fixed HepG2 cells using Coralite®594-conjugated Sam50 antibody (CL594-67425, Clone: 2H6H9) at dilution of 1:100.