

For Research Use Only

# CoraLite®594-conjugated RCC1 Monoclonal antibody



Catalog Number:CL594-67335

## Basic Information

Catalog Number:

CL594-67335

Size:

1000 µg/ml

Source:

Mouse

Isotype:

IgG1

Immunogen Catalog Number:

AG17809

GenBank Accession Number:

BC010067

GeneID (NCBI):

1104

UNIPROT ID:

P18754

Full Name:

regulator of chromosome  
condensation 1

Calculated MW:

421 aa, 45 kDa

Observed MW:

50 kDa

Purification Method:

Protein G purification

CloneNo.:

2C2F5

Recommended Dilutions:

IF 1:50-1:500

Excitation/Emission maxima  
wavelengths:

588 nm / 604 nm

## Applications

Tested Applications:

IF/ICC

Species Specificity:

Human

Positive Controls:

IF : HepG2 cells,

## Background Information

CHC1, also named as RCC1, promotes the exchange of ran-bound gdp by gtp. It is involved in the regulation of onset of chromosome condensation in the S-phase. Phosphorylation of RCC1 on serines located in or near its nuclear localization signal activates RCC1 to generate RanGTP on mitotic chromosomes, which is required for spindle assembly and chromosome segregation.

## Storage

Storage:

Store at -20°C. Avoid exposure to light.

Storage Buffer:

PBS with 50% Glycerol, 0.05% Proclin300, 0.5% BSA, pH 7.3.

Aliquoting is unnecessary for -20°C storage

For technical support and original validation data for this product please contact:

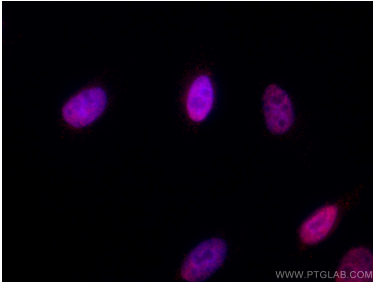
T: 4006900926

E: [Proteintech-CN@ptglab.com](mailto:Proteintech-CN@ptglab.com)

W: [ptgcn.com](http://ptgcn.com)

This product is exclusively available under Proteintech Group brand and is not available to purchase from any other manufacturer.

## Selected Validation Data



Immunofluorescent analysis of (4% PFA) fixed HepG2 cells using Coralite®594 RCC1 antibody (CL594-67335, Clone: 2C2F5 ) at dilution of 1:200. DAPI (blue).