

# CoraLite®594-conjugated MAP2K4 Monoclonal antibody

Catalog Number: **CL594-67333**

## Basic Information

**Catalog Number:**

CL594-67333

**Size:**

1000 µg/ml

**Source:**

Mouse

**Isotype:**

IgG2b

**Immunogen Catalog Number:**

AG11348

**GenBank Accession Number:**

BC036032

**GeneID (NCBI):**

6416

**UNIPROT ID:**

P45985

**Full Name:**

mitogen-activated protein kinase  
kinase 4

**Calculated MW:**

399 aa, 44 kDa

**Observed MW:**

44-50 kDa

**Purification Method:**

Protein A purification

**CloneNo.:**

2E4C1

**Recommended Dilutions:**

IF/ICC 1:50-1:500

**Excitation/Emission maxima  
wavelengths:**

588 nm / 604 nm

## Applications

**Tested Applications:**

IF/ICC, FC (Intra)

**Species Specificity:**

Human

**Positive Controls:**

IF/ICC : HepG2 cells,

## Background Information

MEK4 is also named as JNKK1, MAP2K4, MKK4, PRKMK4, SEK1, SERK1, SKK1 and belongs to the protein kinase superfamily. MEK4 is a member of the mitogen-activated protein kinase family, originally identified as a kinase involved in the stress-activated protein kinase pathway by directly phosphorylating c-Jun NH 2-terminal kinase. This protein has 2 isoforms produced by alternative splicing.

## Storage

**Storage:**

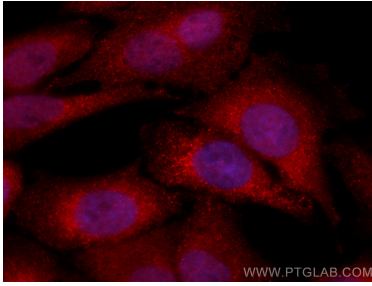
Store at -20°C. Avoid exposure to light. Stable for one year after shipment.

**Storage Buffer:**

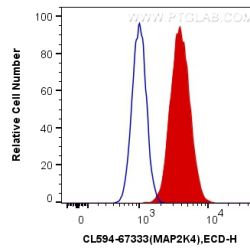
PBS with 50% Glycerol, 0.05% Proclin300, 0.5% BSA, pH 7.3.

Aliquoting is unnecessary for -20°C storage

## Selected Validation Data



Immunofluorescent analysis of (4% PFA) fixed HepG2 cells using CoraLite®594 MAP2K4 antibody (CL594-67333, Clone: 2E4C1 ) at dilution of 1:200.



1X10<sup>6</sup> HepG2 cells were intracellularly stained with 0.4 ug CoraLite®594 Anti-Human MAP2K4 (CL594-67333, Clone:2E4C1) (red), or 0.4 ug Mouse IgG2b Isotype Control (CL594-66360-3, Clone: K11B8C4B5) (blue). Cells were fixed and permeabilized with Transcription Factor Staining Buffer Kit (PF00011).