

# CoraLite®594-conjugated MYH1 Monoclonal antibody

Catalog Number: **CL594-67299**

## Basic Information

**Catalog Number:**

CL594-67299

**Size:**

1000 µg/ml

**Source:**

Mouse

**Isotype:**

IgG2a

**Immunogen Catalog Number:**

AG17129

**GenBank Accession Number:**

BC114545

**GeneID (NCBI):**

4619

**UNIPROT ID:**

P12882

**Full Name:**

myosin, heavy chain 1, skeletal muscle, adult

**Calculated MW:**

1939 aa, 223 kDa

**Observed MW:**

220 kDa

**Purification Method:**

Protein A purification

**CloneNo.:**

1G10H9

**Recommended Dilutions:**

IF-P 1:50-1:500

**Excitation/Emission maxima wavelengths:**

588 nm / 604 nm

## Applications

**Tested Applications:**

IF-P

**Species Specificity:**

Human, mouse, pig

**Positive Controls:**

IF-P: mouse skeletal muscle tissue,

## Background Information

MYH1 (MyHC-2x) encodes the IIX isoform of myosin heavy chain (MyHC). Myosin is a large, ubiquitous, motor protein that generates force through its interaction with actin, thus involving it in a number of cellular processes including cytokinesis, karyokinesis, cell migration, and muscle contraction. Muscle fibers can be divided as type 1 (slow) and type 2 (fast). MYH1 belongs to type 2.

## Storage

**Storage:**

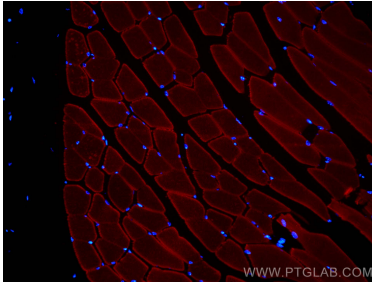
Store at -20°C. Avoid exposure to light. Stable for one year after shipment.

**Storage Buffer:**

PBS with 50% Glycerol, 0.05% Proclin300, 0.5% BSA, pH 7.3.

Aliquoting is unnecessary for -20°C storage

## Selected Validation Data



Immunofluorescent analysis of (4% PFA) fixed mouse skeletal muscle tissue using CoraLite®594 MYH1 antibody (CL594-67299, Clone: 1G10H9 ) at dilution of 1:200.