

For Research Use Only

CoraLite®594-conjugated Ins1 Monoclonal antibody



Catalog Number:CL594-67284

Basic Information

Catalog Number:

CL594-67284

Size:

911 µg/ml

Source:

Mouse

Isotype:

IgG2a

Immunogen Catalog Number:

AG28809

GenBank Accession Number:

NM_019129.3

GeneID (NCBI):

24505

UNIPROT ID:

P01322

Full Name:

insulin 1

Calculated MW:

12 kDa

Purification Method:

Protein A purification

CloneNo.:

3A11C1

Recommended Dilutions:

IF 1:150-1:600

Excitation/Emission maxima

wavelengths:

588 nm / 604 nm

Applications

Tested Applications:

IF-P

Species Specificity:

Rat, mouse

Positive Controls:

IF : rat pancreas tissue, mouse pancreas tissue

Background Information

Storage

Storage:

Store at -20°C. Avoid exposure to light. Stable for one year after shipment.

Storage Buffer:

PBS with 50% Glycerol, 0.05% Proclin300, 0.5% BSA, pH 7.3.

Aliquoting is unnecessary for -20°C storage

For technical support and original validation data for this product please contact:

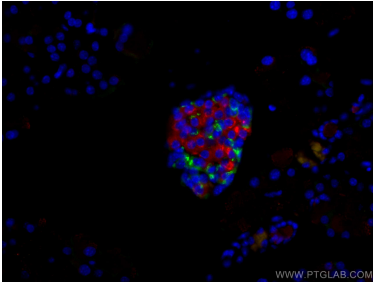
T: 4006900926

E: Proteintech-CN@ptglab.com

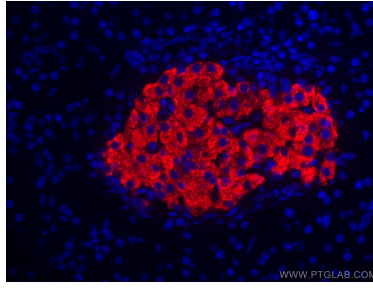
W: ptgcn.com

This product is exclusively available under Proteintech Group brand and is not available to purchase from any other manufacturer.

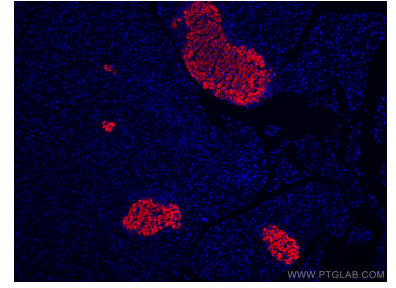
Selected Validation Data



Immunofluorescent analysis of (4% PFA) fixed mouse pancreas tissue using CoraLite®594 Ins1 antibody (CL594-67284, Clone: 3A11C1) at dilution of 1:200, CoraLite®488 Glucagon antibody (CL488-67286, Clone: 2A8G1, green). DAPI (blue).



Immunofluorescent analysis of (4% PFA) fixed rat pancreas tissue using CoraLite®594-conjugated Ins1 antibody (CL594-67284, Clone: 3A11C1) at dilution of 1:300.



Immunofluorescent analysis of (4% PFA) fixed rat pancreas tissue using CoraLite®594-conjugated Ins1 antibody (CL594-67284, Clone: 3A11C1) at dilution of 1:300.