

For Research Use Only

CoraLite®594-conjugated FUCA1 Monoclonal antibody



Catalog Number:CL594-67251

Basic Information

| | | |
|--|---|---|
| Catalog Number: CL594-67251 | GenBank Accession Number: BC017338 | Purification Method: Protein A purification |
| Size: 1000 µg/ml | GeneID (NCBI): 2517 | CloneNo.: 1G5C5 |
| Source: Mouse | UNIPROT ID: P04066 | Recommended Dilutions: IF 1:50-1:500 |
| Isotype: IgG2b | Full Name: fucosidase, alpha-L- 1, tissue | Excitation/Emission maxima wavelengths: 588 nm / 604 nm |
| Immunogen Catalog Number: AG9638 | Calculated MW: 461 aa, 53 kDa | |
| | Observed MW: 50-56 kDa | |

Applications

| | |
|---|--|
| Tested Applications: IF-P | Positive Controls: IF : human liver cancer tissue, |
| Species Specificity: Human, Mouse | |

Background Information

FUCA1(α-L-Fucosidase) is a lysosomal glycosidase which is ubiquitous in eukaryotic cells. This enzyme is usually found as a soluble component of the lysosome and functions as an acid hydrolase in the degradation of numerous and diverse fucoglycoconjugates. The mammalian α-L-fucosidases are relatively large, multisubunit glycoproteins which exist in multiple molecular isoforms. This enzyme may have a role in sperm-egg interactions in the reproductive tract of the female rat. There is a precursor 54 kDa form of rat sperm fucosidase which is processed to a mature 52 kDa form of the enzyme (PMID:8836125). This protein from rat epididymis is a tetramer of 210-220 kDa, made up by two pairs of subunits of 47 and 60 kDa, and the one from human seminal plasma exists in different oligomeric forms, that is, as a dimer, as a tetramer, and as a hexamer made up of a single subunit of 56-57 kDa (PMID:16736526).

Storage

Storage:
Store at -20°C. Avoid exposure to light.
Storage Buffer:
PBS with 50% Glycerol, 0.05% Proclin300, 0.5% BSA, pH 7.3.
Aliquoting is unnecessary for -20°C storage

For technical support and original validation data for this product please contact:

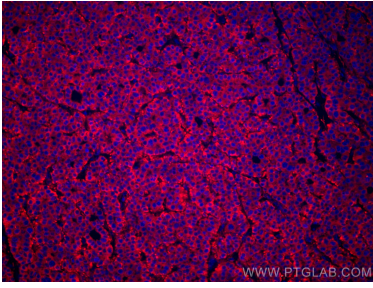
T: 4006900926

E: Proteintech-CN@ptglab.com

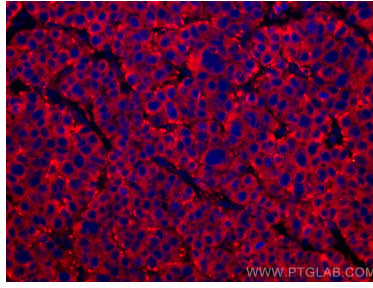
W: ptgcn.com

This product is exclusively available under Proteintech Group brand and is not available to purchase from any other manufacturer.

Selected Validation Data



Immunofluorescent analysis of (4% PFA) fixed human liver cancer tissue using CoraLite®594 FUCA1 antibody (CL594-67251, Clone: 1G5C5) at dilution of 1:200. DAPI (blue).



Immunofluorescent analysis of (4% PFA) fixed human liver cancer tissue using CoraLite®594 FUCA1 antibody (CL594-67251, Clone: 1G5C5) at dilution of 1:200. DAPI (blue).