

# CoraLite® Plus 594-conjugated GPI Monoclonal antibody

Catalog Number: **CL594-67178****Featured Product**

## Basic Information

**Catalog Number:**

CL594-67178

**Size:**

1000 µg/ml

**Source:**

Mouse

**Isotype:**

IgG1

**Immunogen Catalog Number:**

AG7419

**GenBank Accession Number:**

BC004982

**GeneID (NCBI):**

2821

**UNIPROT ID:**

P06744

**Full Name:**

glucose phosphate isomerase

**Calculated MW:**

63 kDa

**Observed MW:**

55-64 kDa

**Purification Method:**

Protein G purification

**CloneNo.:**

2F11E4

**Recommended Dilutions:**

IF/ICC 1:50-1:500

**Excitation/Emission maxima wavelengths:**

594 nm / 615 nm

## Applications

**Tested Applications:**

IF/ICC

**Species Specificity:**

Human

**Positive Controls:**

IF/ICC : PC-3 cells,

## Background Information

GPI (Glucose-6-phosphate isomerase), which is also named as autocrine motility factor (AMF), phosphoglucose isomerase (PGI), Neuroleukinin (NLK), phosphohexose isomerase (PHI) or sperm antigen 36 (SA-36), is a housekeeping cytosolic enzyme that plays a key role in both glycolysis and gluconeogenesis pathways. It is also a multifunctional protein that displays cytokine properties, eliciting mitogenic, motogenic, and differentiation activities, and has been implicated in tumor progression and metastasis (PMID:12783864, 19603112). This protein can exist as a homodimer in the catalytically active form and a monomer in the secreted form (PMID:11371164). It has 2 isoforms produced by alternative splicing with the calculated molecular mass of 63-64 kDa, and an apparent molecular mass of 55 and 64 kDa under non-reducing and reducing conditions, respectively (PMID: 19603112, 11004567).

## Storage

**Storage:**

Store at -20°C. Avoid exposure to light. Stable for one year after shipment.

**Storage Buffer:**

PBS with 50% Glycerol, 0.05% Proclin300, 0.5% BSA, pH 7.3.

Aliquoting is unnecessary for -20°C storage

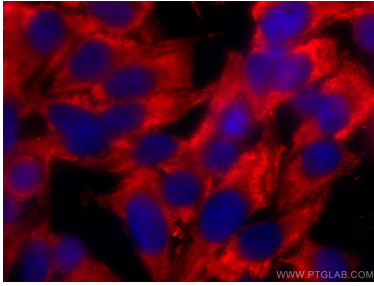
For technical support and original validation data for this product please contact:

T: 4006900926

E: [Proteintech-CN@ptglab.com](mailto:Proteintech-CN@ptglab.com)W: [ptgcn.com](http://ptgcn.com)

This product is exclusively available under Proteintech Group brand and is not available to purchase from any other manufacturer.

## Selected Validation Data



Immunofluorescent analysis of (-20°C Methanol) fixed PC-3 cells using CoraLite® Plus 594 GPI antibody (CL594-67178, Clone: 2F11E4 ) at dilution of 1:200.