

CoraLite®594-conjugated SUMO2/3

Monoclonal antibody

Catalog Number: CL594-67154

Featured Product

Basic Information

Catalog Number:

CL594-67154

Size:

2000 µg/ml

Source:

Mouse

Isotype:

IgG2b

Immunogen Catalog Number:

AG28672

GenBank Accession Number:

BC008450

GeneID (NCBI):

6613

UNIPROT ID:

P61956

Full Name:

SMT3 suppressor of mif two 3
homolog 2 (S. cerevisiae)

Calculated MW:

11 kDa

Observed MW:

18 kDa

Purification Method:

Protein A purification

CloneNo.:

1A1B3

Recommended Dilutions:

IF/ICC 1:50-1:500

Excitation/Emission maxima
wavelengths:

588 nm / 604 nm

Applications

Tested Applications:

IF/ICC, FC (Intra)

Species Specificity:

human, mouse, rat

Positive Controls:

IF/ICC : HeLa cells,

Background Information

Ubiquitin is most famous for its function in targeting proteins for degradation by the 26S proteasome, ubiquitin needs to be attached to a substrate in chains (polyubiquitylation) before being recognized by proteasome. Similarly, SUMO (small ubiquitin-related modifier) can be linked to substrates in chains (polysumoylation), SUMO modification has been implicated in many important cellular processes including the control of genome stability, signal transduction, targeting to and formation of nuclear compartments, cell cycle and meiosis. There are 4 confirmed SUMO isoforms in human, SUMO-1, SUMO-2, SUMO-3 and SUMO-4. SUMO-2 and SUMO-3 are nearly identical but are distinct from SUMO-1. SUMO2/3 conjugation was recently widely involved in neuroprotective activities. A substitution (M55V) of SUMO4 was strongly associated with the pathogenesis of type 1 diabetes (T1D) involving NF kappa B related mechanisms.

Storage

Storage:

Store at -20°C. Avoid exposure to light. Stable for one year after shipment.

Storage Buffer:

PBS with 50% Glycerol, 0.05% Proclin300, 0.5% BSA, pH 7.3.

Aliquoting is unnecessary for -20°C storage

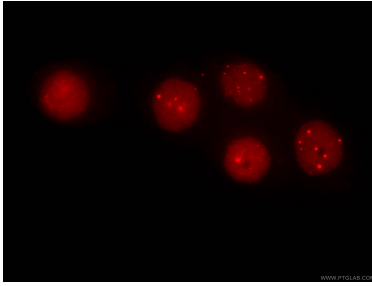
For technical support and original validation data for this product please contact:

T: 4006900926

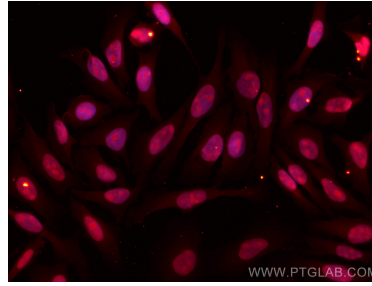
E: Proteintech-CN@ptglab.comW: ptgcn.com

This product is exclusively available under Proteintech Group brand and is not available to purchase from any other manufacturer.

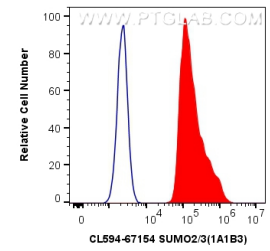
Selected Validation Data



Immunofluorescent analysis of (4% PFA) fixed HeLa cells using CL594-67154 (SUMO2/3 antibody) at dilution of 1:100.



Immunofluorescent analysis of (4% PFA) fixed HeLa cells using CoraLite®594 SUMO2/3 antibody (CL594-67154, Clone: 1A1B3) at dilution of 1:200.



1X10⁶ HeLa cells were intracellularly stained with 0.4 ug CoraLite®594 Anti-Human SUMO2/3 (CL594-67154, Clone:1A1B3) (red), or 0.4 ug Isotype Control. Cells were fixed and permeabilized with Transcription Factor Staining Buffer Kit (PF00011).