

For Research Use Only

CoraLite®594-conjugated PI3 Kinase p110 Beta Monoclonal antibody



Catalog Number:CL594-67121

Basic Information

Catalog Number:

CL594-67121

Size:

1000 µg/ml

Source:

Mouse

Isotype:

IgG1

Immunogen Catalog Number:

AG17505

GenBank Accession Number:

BC114432

GeneID (NCBI):

5291

UNIPROT ID:

P42338

Full Name:

phosphoinositide-3-kinase, catalytic,
beta polypeptide

Calculated MW:

1070 aa, 123 kDa

Observed MW:

120-130 kDa

Purification Method:

Protein G purification

CloneNo.:

1B2A1

Recommended Dilutions:

IF 1:50-1:500

Excitation/Emission maxima

wavelengths:

588 nm / 604 nm

Applications

Tested Applications:

IF/ICC

Species Specificity:

Human, Rat

Positive Controls:

IF : HeLa cells,

Background Information

PIK3CB(phosphatidylinositol 4,5-bisphosphate 3-kinase catalytic subunit beta isoform) is also named as PIK3C1, PI3K-beta, p110beta. The gene encodes a 1070 amino acid protein which belongs to the PI3/PI4-kinase family. Phosphoinositide 3-kinases (PI3Ks) have been implicated as participants in signaling pathways regulating cell growth by virtue of their activation in response to various mitogenic stimuli. The class I PI3 kinases are heterodimers composed of 110 kDa catalytic subunits that associate with regulatory adaptor proteins. Four class I catalytic subunits have been identified, PIK3CA (p110 α), PIK3CB (p110 β), PIK3CD (p110 δ) and PIK3CG (p110 γ) (PMID:19177002).

Storage

Storage:

Store at -20°C. Avoid exposure to light.

Storage Buffer:

PBS with 50% Glycerol, 0.05% Proclin300, 0.5% BSA, pH 7.3.

Aliquoting is unnecessary for -20°C storage

For technical support and original validation data for this product please contact:

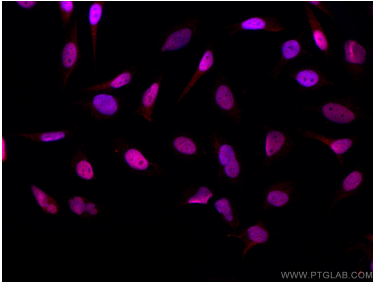
T: 4006900926

E: Proteintech-CN@ptglab.com

W: ptgcn.com

This product is exclusively available under Proteintech Group brand and is not available to purchase from any other manufacturer.

Selected Validation Data



Immunofluorescent analysis of (4% PFA) fixed HeLa cells using CoraLite®594 PI3 Kinase p110 Beta antibody (CL594-67121, Clone: 1B2A1) at dilution of 1:200. DAPI (blue).