

CoraLite®594-conjugated C1QA

Monoclonal antibody

Catalog Number: **CL594-67063**

Basic Information

Catalog Number:

CL594-67063

Size:

1000 µg/ml

Source:

Mouse

Isotype:

IgG1

Immunogen Catalog Number:

AG28622

GenBank Accession Number:

BC030153

GeneID (NCBI):

712

UNIPROT ID:

P02745

Full Name:complement component 1, q
subcomponent, A chain**Calculated MW:**

245 aa, 26 kDa

Observed MW:

30 kDa

Purification Method:

Protein G purification

CloneNo.:

1B10E3

Recommended Dilutions:

IF/ICC 1:50-1:500

**Excitation/Emission maxima
wavelengths:**

588 nm / 604 nm

Applications

Tested Applications:

IF/ICC

Species Specificity:

Human

Positive Controls:

IF/ICC : HepG2 cells,

Background Information

The first component of complement, C1, is a calcium-dependent complex of the 3 subcomponents C1q, C1r, and C1s. C1q is composed of 18 polypeptide chains: six A-chains, six B-chains, and six C-chains. Each chain contains a collagen-like region located near the N terminus and a C-terminal globular region. Deficiency of C1q has been associated with lupus erythematosus and glomerulonephritis. This antibody is raised against C1qA which is the A-chain polypeptide of human complement subcomponent C1q.

Storage

Storage:

Store at -20°C. Avoid exposure to light.

Storage Buffer:

PBS with 50% Glycerol, 0.05% Proclin300, 0.5% BSA, pH 7.3.

Aliquoting is unnecessary for -20°C storage

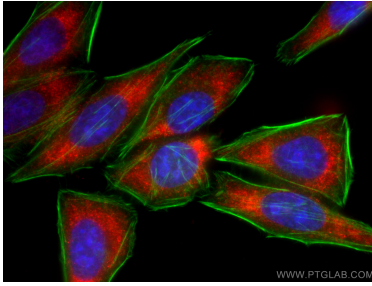
For technical support and original validation data for this product please contact:

T: 4006900926

E: Proteintech-CN@ptglab.comW: ptgcn.com

This product is exclusively available under Proteintech Group brand and is not available to purchase from any other manufacturer.

Selected Validation Data



Immunofluorescent analysis of (-20°C Ethanol) fixed HepG2 cells using CoraLite®594 C1QA antibody (CL594-67063, Clone: 1B10E3) at dilution of 1:200, CL488-Phalloidin (green).