

For Research Use Only

# CoraLite®594-conjugated CYP27A1 Monoclonal antibody



Catalog Number:CL594-67045

## Basic Information

Catalog Number:

CL594-67045

Size:

1000 µg/ml

Source:

Mouse

Isotype:

IgG1

Immunogen Catalog Number:

AG7746

GenBank Accession Number:

BC051851

GeneID (NCBI):

1593

UNIPROT ID:

Q02318

Full Name:

cytochrome P450, family 27,  
subfamily A, polypeptide 1

Calculated MW:

60 kDa

Observed MW:

54-60 kDa

Purification Method:

Protein G purification

CloneNo.:

3G3F7

Recommended Dilutions:

IF 1:50-1:500

Excitation/Emission maxima  
wavelengths:

588 nm / 604 nm

## Applications

Tested Applications:

IF-P

Species Specificity:

Human, Mouse, Rat

Positive Controls:

IF : human liver cancer tissue,

## Background Information

### Storage

Storage:

Store at -20°C. Avoid exposure to light.

Storage Buffer:

PBS with 50% Glycerol, 0.05% Proclin300, 0.5% BSA, pH 7.3.

Aliquoting is unnecessary for -20°C storage

For technical support and original validation data for this product please contact:

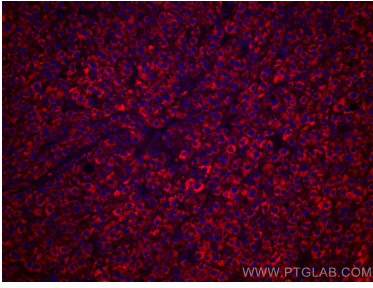
T: 4006900926

E: [Proteintech-CN@ptglab.com](mailto:Proteintech-CN@ptglab.com)

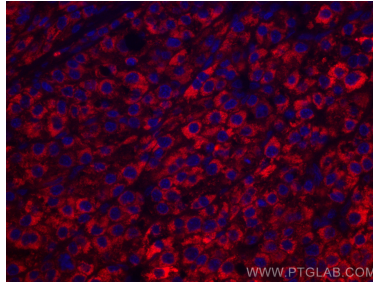
W: [ptgcn.com](http://ptgcn.com)

This product is exclusively available under Proteintech Group brand and is not available to purchase from any other manufacturer.

## Selected Validation Data



Immunofluorescent analysis of (4% PFA) fixed human liver cancer tissue using CoraLite®594 CYP27A1 antibody (CL594-67045, Clone: 3G3F7) at dilution of 1:200.



Immunofluorescent analysis of (4% PFA) fixed human liver cancer tissue using CoraLite®594 CYP27A1 antibody (CL594-67045, Clone: 3G3F7) at dilution of 1:200.