

For Research Use Only

CoraLite®594-conjugated DNASE1L3 Monoclonal antibody



Catalog Number:CL594-67041

Basic Information

Catalog Number:

CL594-67041

Size:

1000 µg/ml

Source:

Mouse

Isotype:

IgG2a

Immunogen Catalog Number:

AG28187

GenBank Accession Number:

BC015831

GeneID (NCBI):

1776

UNIPROT ID:

Q13609

Full Name:

deoxyribonuclease I-like 3

Calculated MW:

305 aa, 36 kDa

Observed MW:

33-38 kDa

Purification Method:

Protein A purification

CloneNo.:

1A4D4

Recommended Dilutions:

IF 1:50-1:500

**Excitation/Emission maxima
wavelengths:**

588 nm / 604 nm

Applications

Tested Applications:

FC (Intra), IF/ICC

Species Specificity:

Human, mouse

Positive Controls:

IF : HepG2 cells,

Background Information

Deoxyribonuclease 1-like 3 (DNASE1L3, DNase gamma, DNase Y, LS-DNase) is member of a DNASE1 protein family that is identified by similar biochemical properties such as Ca²⁺/Mg²⁺- dependency and an optimal pH of about 7.0 as well as by a high similarity in their nucleic acid and amino acid sequences [PMID:15796714]. It is an endonuclease and cleaves double-stranded DNA (and single-stranded DNA) producing 3' -OH/5' -P ends, which is Ca²⁺/Mg²⁺-dependent and inhibited by Zn²⁺, but not by monomeric actin [PMID:9665719]. In addition, it has been suggested to be involved in apoptotic DNA fragmentation of thymocytes' neuronal PC12 cells, C2C12 myoblasts and of cell lines expressing the recombinant nuclease [PMID: 7957253, 9307016]

Storage

Storage:

Store at -20°C. Avoid exposure to light. Stable for one year after shipment.

Storage Buffer:

PBS with 50% Glycerol, 0.05% Proclin300, 0.5% BSA, pH 7.3.

Aliquoting is unnecessary for -20°C storage

For technical support and original validation data for this product please contact:

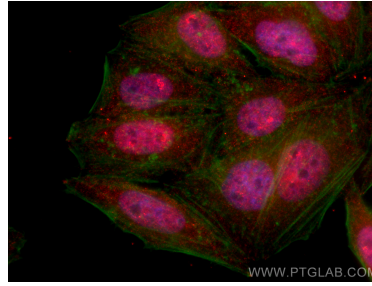
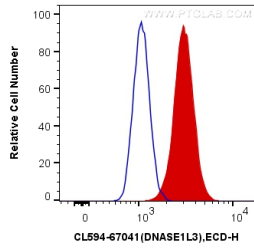
T: 4006900926

E: Proteintech-CN@ptglab.com

W: ptgcn.com

This product is exclusively available under Proteintech Group brand and is not available to purchase from any other manufacturer.

Selected Validation Data



1X10⁶ HepG2 cells were intracellularly stained with 0.4 ug CoraLite@594 Anti-Human DNASE1L3 (CL594-67041, Clone:1A4D4) (red), or 0.4 ug Mouse IgG2a Isotype Control (CL594-66360-2, Clone: K11A1B2A2) (blue). Cells were fixed with 4% PFA and permeabilized with Flow Cytometry Perm Buffer (PF00011-C).

Immunofluorescent analysis of (4% PFA) fixed HepG2 cells using CoraLite@594 DNASE1L3 antibody (CL594-67041, Clone: 1A4D4) at dilution of 1:200, CL488-Phalloidin (green).