

For Research Use Only

# CoraLite® Plus 594-conjugated RRM2 Monoclonal antibody



Catalog Number: CL594-67006

## Basic Information

Catalog Number:

CL594-67006

Size:

1000 µg/ml

Source:

Mouse

Isotype:

IgG1

Immunogen Catalog Number:

AG28664

GenBank Accession Number:

BC030154

GeneID (NCBI):

6241

UNIPROT ID:

P31350

Full Name:

ribonucleotide reductase M2  
polypeptide

Calculated MW:

389 aa, 45 kDa

Observed MW:

45 kDa

Purification Method:

Protein G purification

CloneNo.:

2A9A7

Recommended Dilutions:

IF 1:50-1:500

Excitation/Emission maxima  
wavelengths:

594 nm / 615 nm

## Applications

Tested Applications:

FC (Intra), IF/ICC

Species Specificity:

Human

Positive Controls:

IF : HepG2 cells,

## Background Information

Ribonucleotide reductase M2 subunit is one of two subunits that constitute ribonucleotide reductase, the enzyme that catalyzes the conversion of ribonucleotide 5'-diphosphates into 2'-deoxyribonucleotides, a rate-limiting step in the production of 2'-deoxyribonucleoside 5'-diphosphates (dNTP) required for DNA synthesis and repair that is required for DNA synthesis and repair [PMID:20825972, 19250552]. RRM2 is only expressed during the late G1/early S phase, and degraded in late S phase, and the activity of RNR, and therefore DNA synthesis and cell proliferation, is controlled during the cell cycle by the synthesis and degradation of RRM2 subunit [PMID:3894352].

## Storage

Storage:

Store at -20°C. Avoid exposure to light. Stable for one year after shipment.

Storage Buffer:

PBS with 50% Glycerol, 0.05% Proclin300, 0.5% BSA, pH 7.3.

Aliquoting is unnecessary for -20°C storage

For technical support and original validation data for this product please contact:

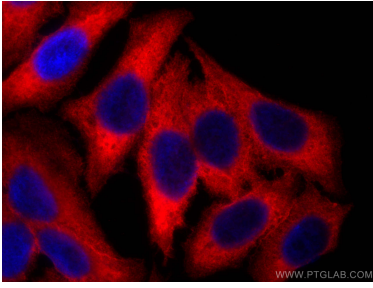
T: 4006900926

E: Proteintech-CN@ptglab.com

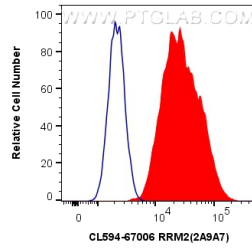
W: ptgcn.com

This product is exclusively available under Proteintech Group brand and is not available to purchase from any other manufacturer.

## Selected Validation Data



Immunofluorescent analysis of (-20°C Ethanol) fixed HepG2 cells using CoraLite® Plus 594 RRM2 antibody (CL594-67006, Clone: 2A9A7) at dilution of 1:200.



1X10<sup>6</sup> HepG2 cells were intracellularly stained with 0.8 ug CoraLite® Plus 594 Anti-Human RRM2 (CL594-67006, Clone:2A9A7) (red), or 0.8 ug CoraLite® 594 Mouse IgG1 Isotype Control (MOPC-21) (CL594-65124, Clone: MOPC-21) (blue). Cells were fixed with 4% PFA and permeabilized with Flow Cytometry Perm Buffer (PF00011-C).