

For Research Use Only

# CoraLite®594-conjugated TBL1X Monoclonal antibody



Catalog Number:CL594-66955

## Basic Information

Catalog Number:

CL594-66955

Size:

1000 µg/ml

Source:

Mouse

Isotype:

IgG2a

Immunogen Catalog Number:

AG5291

GenBank Accession Number:

BC032708

GeneID (NCBI):

6907

UNIPROT ID:

O60907

Full Name:

transducin (beta)-like 1X-Linked

Calculated MW:

526 aa, 57 kDa

Observed MW:

57 kDa, 62 kDa

Purification Method:

Protein A purification

CloneNo.:

1A9A1

Recommended Dilutions:

IF/ICC 1:50-1:500

Excitation/Emission maxima

wavelengths:

588 nm / 604 nm

## Applications

Tested Applications:

IF/ICC

Species Specificity:

Human

Positive Controls:

IF/ICC : HeLa cells,

## Background Information

### Storage

Storage:

Store at -20°C. Avoid exposure to light.

Storage Buffer:

PBS with 50% Glycerol, 0.05% Proclin300, 0.5% BSA, pH 7.3.

Aliquoting is unnecessary for -20°C storage

For technical support and original validation data for this product please contact:

T: 4006900926

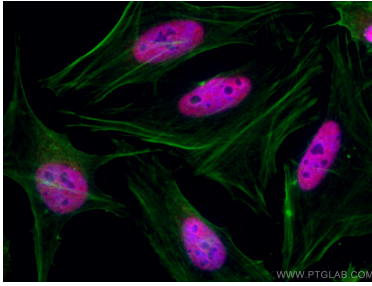
E: [Proteintech-CN@ptglab.com](mailto:Proteintech-CN@ptglab.com)

W: [ptgcn.com](http://ptgcn.com)

This product is exclusively available under Proteintech Group brand and is not available to purchase from any other manufacturer.

---

## Selected Validation Data



Immunofluorescent analysis of (4% PFA) fixed HeLa cells using CoraLite® 594 TBL1X antibody (CL594-66955, Clone: 1A9A1 ) at dilution of 1:200, CL488-phalloidin (green).