

For Research Use Only

# CoraLite®594-conjugated RDM1 Monoclonal antibody



Catalog Number:CL594-66941

## Basic Information

|   |  |   |
|---|--|---|
| <b>Catalog Number:</b><br>CL594-66941       | <b>GenBank Accession Number:</b><br>BC038301 | <b>Purification Method:</b><br>Protein A purification                 |
| <b>Size:</b><br>1000 µg/ml                  | <b>GeneID (NCBI):</b><br>201299              | <b>CloneNo.:</b><br>1C10B4  |
| <b>Source:</b><br>Mouse                     | <b>UNIPROT ID:</b><br>Q8NG50                 | <b>Recommended Dilutions:</b><br>IF 1:50-1:500                        |
| <b>Isotype:</b><br>IgG2a                    | <b>Full Name:</b><br>RAD52 motif 1           | <b>Excitation/Emission maxima<br/>wavelengths:</b><br>588 nm / 604 nm |
| <b>Immunogen Catalog Number:</b><br>AG28686 | <b>Calculated MW:</b><br>284 aa, 32 kDa      |   |
|   | <b>Observed MW:</b><br>32 kDa                |   |

## Applications

|                                       |   |
|---------------------------------------|---|
| <b>Tested Applications:</b><br>IF/ICC | <b>Positive Controls:</b><br>IF : A549 cells, |
| <b>Species Specificity:</b><br>Human  |   |

## Background Information

RDM1, also named as RAD52B, encodes a RNA recognition motif (RRM)-containing protein conferred resistance to the antitumor agent cisplatin. The expression of RDM1 is closely related to the cell proliferation and apoptosis of thyroid carcinoma cells and RDM1 may be a potential marker of lung adenocarcinoma. RDM1 has many isoforms (8 kDa, 12-19 kDa and 25-32 kDa) with long or short N-terminus and a great diversity in the exonic composition of C-terminus generated by alternative pre-mRNA splicing and differential usage of two translational start sites. RDM1 protein can be expressed differently in cytoplasm or nuclear/nucleolar in the absence of stress, proteotoxic stress and mild heat shock, suggesting functional differences among the RDM1 proteins. ( PMID: 28939762, 17905820, 28939762, 30069034)

## Storage

**Storage:**  
Store at -20°C. Avoid exposure to light.  
**Storage Buffer:**  
PBS with 50% Glycerol, 0.05% Proclin300, 0.5% BSA, pH 7.3.  
Aliquoting is unnecessary for -20°C storage

For technical support and original validation data for this product please contact:

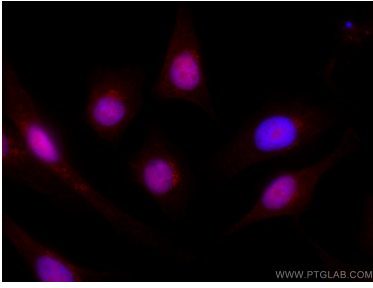
T: 4006900926

E: Proteintech-CN@ptglab.com

W: ptgcn.com

**This product is exclusively available under Proteintech Group brand and is not available to purchase from any other manufacturer.**

## Selected Validation Data



Immunofluorescent analysis of (4% PFA) fixed A549 cells using CoraLite®594 RDM1 antibody (CL594-66941, Clone: 1C10B4) at dilution of 1:200.