

For Research Use Only

# CoraLite®594-conjugated ADH1B Monoclonal antibody



Catalog Number:CL594-66939

Featured Product

## Basic Information

Catalog Number:

CL594-66939

Size:

1000 µg/ml

Source:

Mouse

Isotype:

IgG2a

Immunogen Catalog Number:

AG10630

GenBank Accession Number:

BC033009

GeneID (NCBI):

125

UNIPROT ID:

P00325

Full Name:

alcohol dehydrogenase 1B (class I),  
beta polypeptide

Calculated MW:

375 aa, 40 kDa

Observed MW:

35-40 kDa

Purification Method:

Protein A purification

CloneNo.:

1F1B4

Recommended Dilutions:

IF/ICC 1:50-1:500

Excitation/Emission maxima  
wavelengths:

588 nm / 604 nm

## Applications

Tested Applications:

IF/ICC

Species Specificity:

Human, Mouse, Rat, Pig

Positive Controls:

IF/ICC : HepG2 cells,

## Background Information

The ADH1B gene encodes the beta subunit of class I alcohol dehydrogenase (ADH), an enzyme that catalyzes the rate-limiting step for ethanol metabolism: the oxidation of alcohol to acetaldehyde. Class 1 ADH is a homo- or heterodimeric molecule, formed by the association of 3 types of class I ADH subunits, alpha (ADH1A), beta, and gamma (ADH1C). ADH1B is also named as ADH2 and belongs to the zinc-containing alcohol dehydrogenase family. This protein can exist as a homodimer (PMID:19365573).

## Storage

Storage:

Store at -20°C. Avoid exposure to light. Stable for one year after shipment.

Storage Buffer:

PBS with 50% Glycerol, 0.05% Proclin300, 0.5% BSA, pH 7.3.

Aliquoting is unnecessary for -20°C storage

For technical support and original validation data for this product please contact:

T: 4006900926

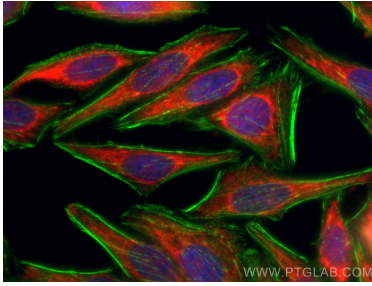
E: [Proteintech-CN@ptglab.com](mailto:Proteintech-CN@ptglab.com)

W: [ptgcn.com](http://ptgcn.com)

This product is exclusively available under Proteintech Group brand and is not available to purchase from any other manufacturer.

---

## Selected Validation Data



Immunofluorescent analysis of (-20°C Ethanol) fixed HepG2 cells using CoraLite®594 ADH1B antibody (CL594-66939, Clone: 1F1B4 ) at dilution of 1:200, CL488-Phalloidin (green).