

For Research Use Only

CoraLite®594-conjugated Cathepsin L Monoclonal antibody

Catalog Number: CL594-66914

Featured Product



Basic Information

Catalog Number:

CL594-66914

Source:

Mouse

Isotype:

IgG2b

Immunogen Catalog Number:

AG27951

GenBank Accession Number:

BC012612

GeneID (NCBI):

1514

UNIPROT ID:

P07711

Full Name:

cathepsin L1

Calculated MW:

38 kDa

Observed MW:

43 kDa

Purification Method:

Protein A purification

CloneNo.:

1A12G8

Recommended Dilutions:

IF/ICC: 1:50-1:500

FC (Intra): 0.80 ug per 10⁶ cells in a 100 µl suspension

Excitation/Emission maxima wavelengths:

588 nm / 604 nm

Applications

Tested Applications:

IF/ICC, FC (Intra)

Species Specificity:

human

Positive Controls:

IF/ICC : HeLa cells,

FC (Intra) : A549 cells,

Background Information

CTSL1(Cathepsin L1) is also named as CTSL and MEP, belongs to the peptidase C1 family. It is a lysosomal proteinase whose expression is also up-regulated in the skeletal muscle during starvation(PMID:20088826). It plays an intracellular role in normal intestinal epithelial polarization and initiation of neoplasia(PMID:17622569). CTSL1 also improves cardiac function and inhibits cardiac hypertrophy, inflammation, and fibrosis through blocking AKT/GSK3B signaling(PMID:19096818). The full length protein is 38 kDa with a signal peptide, two propeptide and a glycosylation site. It has been detected the 36 kDa, 39 kDa, 29 kDa and 21 kDa in rat gastrocnemius muscle. These forms of cathepsin L could either be attributed to differences in glycosylation or to partial processing of the proenzyme. (PMID:11696001)

Storage

Storage:

Store at -20°C. Avoid exposure to light. Stable for one year after shipment.

Storage Buffer:

PBS with 50% glycerol, 0.05% Proclin300, 0.5% BSA, pH7.3

Aliquoting is unnecessary for -20°C storage

For technical support and original validation data for this product please contact:

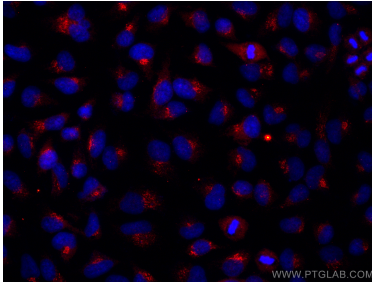
T: 4006900926

E: Proteintech-CN@ptglab.com

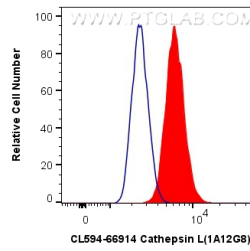
W: ptgcn.com

This product is exclusively available under Proteintech Group brand and is not available to purchase from any other manufacturer.

Selected Validation Data



Immunofluorescent analysis of (-20°C Ethanol) fixed HeLa cells using CoraLite®594 Cathepsin L antibody (CL594-66914, Clone: 1A12G8) at dilution of 1:200.



1X10⁶ A549 cells were intracellularly stained with 0.8 ug CoraLite®594 Anti-Human Cathepsin L (CL594-66914, Clone:1A12G8) (red), or 0.8 ug Control Antibody. Cells were fixed with 4% PFA and permeabilized with Flow Cytometry Perm Buffer.