

For Research Use Only

CoraLite®594-conjugated Calnexin Monoclonal antibody



Catalog Number:CL594-66903

Basic Information

Catalog Number:

CL594-66903

Size:

1000 µg/ml

Source:

Mouse

Isotype:

IgG1

Immunogen Catalog Number:

AG25535

GenBank Accession Number:

BC003552

GeneID (NCBI):

821

UNIPROT ID:

P27824

Full Name:

calnexin

Calculated MW:

90 kDa

Observed MW:

90 kDa

Purification Method:

Protein G purification

CloneNo.:

2A2C6

Recommended Dilutions:

WB 1:500-1:2000

IF/ICC 1:50-1:500

Excitation/Emission maxima wavelengths:

588 nm / 604 nm

Applications

Tested Applications:

IF/ICC, WB

Species Specificity:

Human

Positive Controls:

WB : HEK-293 cells, HeLa cells, HepG2 cells

IF/ICC : HepG2 cells, SKOV-3 cells

Background Information

Calnexin is a molecular chaperone that resides in the endoplasmic reticulum (ER) and participates in the folding and assembly of newly synthesized proteins. Calnexin is highly abundant in ER and is frequently used as an ER marker.

Storage

Storage:

Store at -20°C. Avoid exposure to light. Stable for one year after shipment.

Storage Buffer:

PBS with 50% Glycerol, 0.05% Proclin300, 0.5% BSA, pH 7.3.

Aliquoting is unnecessary for -20°C storage

For technical support and original validation data for this product please contact:

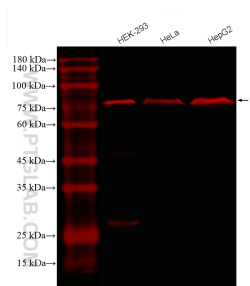
T: 4006900926

E: Proteintech-CN@ptglab.com

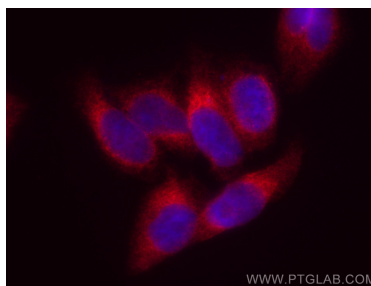
W: ptgcn.com

This product is exclusively available under Proteintech Group brand and is not available to purchase from any other manufacturer.

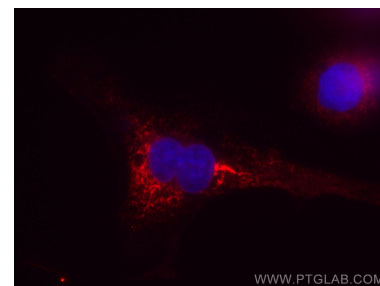
Selected Validation Data



Various lysates were subjected to SDS PAGE followed by western blot with CL594-66903 (Calnexin antibody) at dilution of 1:1000 incubated at room temperature for 1.5 hours.



Immunofluorescent analysis of (4% PFA) fixed HepG2 cells using CoraLite®594 Calnexin antibody (CL594-66903, Clone: 2A2C6) at dilution of 1:200.



Immunofluorescent analysis of (4% PFA) fixed SKOV-3 cells using CoraLite®594 Calnexin antibody (CL594-66903, Clone: 2A2C6) at dilution of 1:200.