

For Research Use Only

# CoraLite®594-conjugated DLC1 Monoclonal antibody



Catalog Number: CL594-66894

## Basic Information

Catalog Number:

CL594-66894

Size:

1000 µg/ml

Source:

Mouse

Isotype:

IgG1

Immunogen Catalog Number:

AG24404

GenBank Accession Number:

BC054511

GeneID (NCBI):

10395

UNIPROT ID:

Q96QB1

Full Name:

deleted in liver cancer 1

Calculated MW:

171 kDa

Observed MW:

115 kDa

Purification Method:

Protein G purification

CloneNo.:

1G10H12

Recommended Dilutions:

IF 1:50-1:500

Excitation/Emission maxima  
wavelengths:

588 nm / 604 nm

## Applications

Tested Applications:

IF/ICC

Species Specificity:

Human

Positive Controls:

IF : A375 cells,

## Background Information

Deleted in Liver Cancer 1 (DLC1) is a RhoGAP-containing tumor suppressor that inhibits angiogenesis by repressing VEGF production in epithelial cells. DLC1 is often down-regulated in a variety of cancers, such as those of the liver, lung, breast, stomach, brain, colon and prostate due to either genomic deletion or aberrant DNA methylation.

## Storage

Storage:

Store at -20°C. Avoid exposure to light. Stable for one year after shipment.

Storage Buffer:

PBS with 50% Glycerol, 0.05% Proclin300, 0.5% BSA, pH 7.3.

Aliquoting is unnecessary for -20°C storage

For technical support and original validation data for this product please contact:

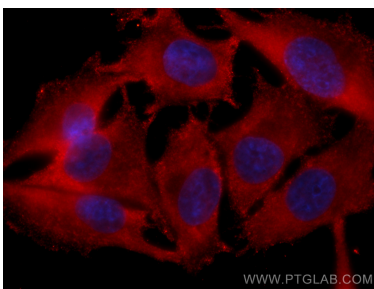
T: 4006900926

E: [Proteintech-CN@ptglab.com](mailto:Proteintech-CN@ptglab.com)

W: [ptgcn.com](http://ptgcn.com)

This product is exclusively available under Proteintech Group brand and is not available to purchase from any other manufacturer.

## Selected Validation Data



Immunofluorescent analysis of (-20°C Methanol) fixed A375 cells using CoraLite®594 DLC1 antibody (CL594-66894, Clone: 1G10H12 ) at dilution of 1:200.