

For Research Use Only

# CoraLite®594-conjugated GRB2 Monoclonal antibody



Catalog Number:CL594-66880

Featured Product

## Basic Information

Catalog Number:

CL594-66880

Size:

1000 µg/ml

Source:

Mouse

Isotype:

IgG1

Immunogen Catalog Number:

AG0395

GenBank Accession Number:

BC000631

GeneID (NCBI):

2885

UNIPROT ID:

P62993

Full Name:

growth factor receptor-bound protein

2

Calculated MW:

25 kDa

Observed MW:

25 kDa

Purification Method:

Protein G purification

CloneNo.:

1C5D11

Recommended Dilutions:

IF/ICC 1:50-1:500

Excitation/Emission maxima

wavelengths:

588 nm / 604 nm

## Applications

Tested Applications:

IF/ICC

Species Specificity:

Human, Mouse, Rat

Positive Controls:

IF/ICC : HeLa cells,

## Background Information

GRB2 (growth factor receptor-bound protein 2) binds the epidermal growth factor receptor and contains one SH2 domain and two SH3 domains. Two alternatively spliced transcript variants encoding different isoforms have been found for this gene. N-SH3 domain of Grb2 was involved in the protein vesicular localization including amyloid-β protein precursor (AβPP). Involvement of GRB2 in Ras-signaling pathway has been reported, recent finding show that GRB2 may also play a complex role in T and B-cell antigen receptor signaling.

## Storage

Storage:

Store at -20°C. Avoid exposure to light.

Storage Buffer:

PBS with 50% Glycerol, 0.05% Proclin300, 0.5% BSA, pH 7.3.

Aliquoting is unnecessary for -20°C storage

For technical support and original validation data for this product please contact:

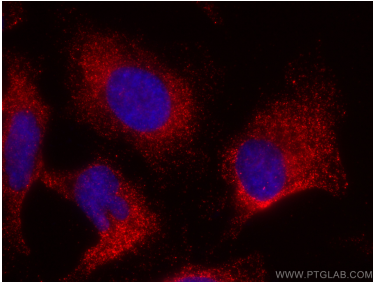
T: 4006900926

E: [Proteintech-CN@ptglab.com](mailto:Proteintech-CN@ptglab.com)

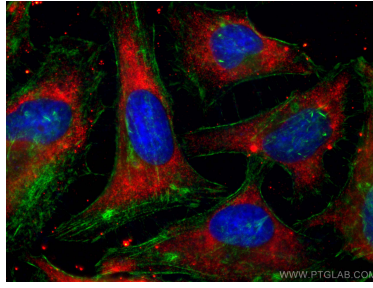
W: [ptgcn.com](http://ptgcn.com)

This product is exclusively available under Proteintech Group brand and is not available to purchase from any other manufacturer.

## Selected Validation Data



Immunofluorescent analysis of (-20°C Methanol) fixed HeLa cells using CoraLite@594 GRB2 antibody (CL594-66880, Clone: 1C5D11) at dilution of 1:200.



Immunofluorescent analysis of (-20°C Ethanol) fixed HeLa cells using CoraLite@594 GRB2 antibody (CL594-66880, Clone: 1C5D11) at dilution of 1:200, CL488-phalloidin (green).