

CoraLite®594-conjugated CPLX2 Monoclonal antibody

Catalog Number:CL594-66849

Basic Information

Catalog Number:

CL594-66849

Size:

1000 ug/ml

Source:

Mouse

Isotype:

IgG1

Immunogen Catalog Number:

AG27949

GenBank Accession Number:

BC093706

GeneID (NCBI):

10814

UNIPROT ID:

Q6PUV4

Full Name:

complexin 2

Calculated MW:

134 aa, 15 kDa

Observed MW:

18-20 kDa

Purification Method:

Protein G purification

CloneNo.:

1B2A11

**Excitation/Emission maxima
wavelengths:**

588 nm / 604 nm

Applications

Tested Applications:

FC (Intra)

Species Specificity:

human, mouse, rat

Background Information

Complexins are soluble proteins that regulate the activity of soluble N-ethylmaleimide-sensitive factor attachment protein receptor (SNARE) complexes necessary for vesicle fusion. Neuronal specific complexin 1 (CPLX1) has inhibitory and stimulatory effects on exocytosis by clamping trans-SNARE complexes in a prefusion state and promoting conformational changes to facilitate membrane fusion following cell stimulation. Complexin2 (CPLX2) is a pre-synaptic protein believed to regulate neurotransmitter release from pre-synaptic terminals, it is downregulated in schizophrenic patients suffering from depression, animal models of depression and neurological disorders such as Huntington's disease in which depression is a major symptom.

Storage

Storage:

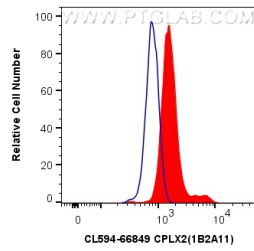
Store at -20°C. Avoid exposure to light. Stable for one year after shipment.

Storage Buffer:

PBS with 50% Glycerol, 0.05% Proclin300, 0.5% BSA, pH 7.3.

Aliquoting is unnecessary for -20°C storage

Selected Validation Data



1X10⁶ SH-SY5Y cells were intracellularly stained with 0.4 ug CoraLite® 594 Anti-Human CPLX2 (CL594-66849, Clone:1B2A11) (red), or 0.4 ug Control Antibody. Cells were fixed and permeabilized with Transcription Factor Staining Buffer Kit (PF00011).