

# CoraLite®594-conjugated GLUT4 Monoclonal antibody

Catalog Number: **CL594-66846**

## Basic Information

**Catalog Number:**

CL594-66846

**Size:**

1000 µg/ml

**Source:**

Mouse

**Isotype:**

IgG2b

**Immunogen Catalog Number:**

AG15390

**GenBank Accession Number:**

BC069615

**GeneID (NCBI):**

6517

**UNIPROT ID:**

P14672

**Full Name:**

solute carrier family 2 (facilitated glucose transporter), member 4

**Calculated MW:**

509 aa, 55 kDa

**Observed MW:**

48-50 kDa

**Purification Method:**

Protein A purification

**CloneNo.:**

3G7C9

**Recommended Dilutions:**

IF/ICC 1:50-1:500

**Excitation/Emission maxima wavelengths:**

588 nm / 604 nm

## Applications

**Tested Applications:**

IF/ICC, FC (Intra)

**Species Specificity:**

human, mouse, rat, pig

**Positive Controls:**

IF/ICC : HeLa cells,

## Background Information

GLUT4 is a member of GLUT family of transmembrane hexose transporters. It is an INS receptor that mediates INS-stimulated glucose transport in fat and muscle where it is predominantly expressed. In response to INS stimulation, GLUT4 experienced translocation from trans-Golgi network to plasma membrane. The impairment of GLUT4 translocation is associated with diabetes.

## Storage

**Storage:**

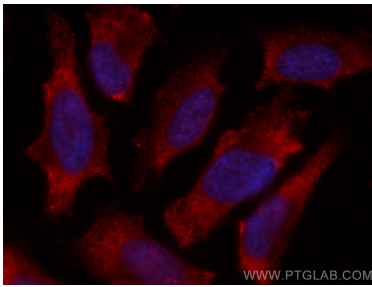
Store at -20°C. Avoid exposure to light. Stable for one year after shipment.

**Storage Buffer:**

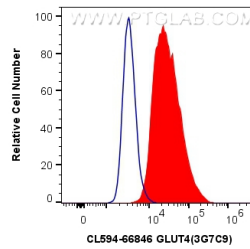
PBS with 50% Glycerol, 0.05% Proclin300, 0.5% BSA, pH 7.3.

Aliquoting is unnecessary for -20°C storage

## Selected Validation Data



Immunofluorescent analysis of (-20°C Ethanol) fixed HeLa cells using CoraLite®594 GLUT4 antibody (CL594-66846, Clone: 3G7C9) at dilution of 1:200.



1X10<sup>6</sup> HEK-293 cells were intracellularly stained with 0.4 ug CoraLite®594 Anti-Human GLUT4 (CL594-66846, Clone:3G7C9) (red), or 0.4 ug Mouse IgG2b Isotype Control (CL594-66360-3, Clone: K11B8C4B5) (blue). Cells were fixed with 4% PFA and permeabilized with Flow Cytometry Perm Buffer (PF00011-C).