

# CoraLite®594-conjugated CCR6 Monoclonal antibody

Catalog Number: **CL594-66801**

## Basic Information

<b>Catalog Number:</b> CL594-66801	<b>GenBank Accession Number:</b> BC037960	<b>Purification Method:</b> Protein A purification
<b>Size:</b> 1000 µg/ml	<b>GeneID (NCBI):</b> 1235	<b>CloneNo.:</b> 1C11A9
<b>Source:</b> Mouse	<b>UNIPROT ID:</b> P51684	<b>Recommended Dilutions:</b> IF-P 1:50-1:500
<b>Isotype:</b> IgG2a	<b>Full Name:</b> chemokine (C-C motif) receptor 6	<b>Excitation/Emission maxima wavelengths:</b> 588 nm / 604 nm
<b>Immunogen Catalog Number:</b> AG24195	<b>Calculated MW:</b> 42 kDa	

## Applications

<b>Tested Applications:</b> IF-P	<b>Positive Controls:</b> IF-P : human tonsillitis tissue,
<b>Species Specificity:</b> Human	

## Background Information

CCR6, also known CD196, is a C-C chemokine receptor that belongs to family A of G protein-coupled receptor superfamily. It is expressed on most B cells, memory T cells, and some subsets of dendritic cells (PMID: 17057190). CCR6 is a receptor for the C-C type chemokine CCL20 (PMID: 9169459). The ligand-receptor pair CCL20-CCR6 is responsible for the chemoattraction of immature dendritic cells, effector/memory T-cells and B-cells and plays a role at skin and mucosal surfaces under homeostatic and inflammatory conditions, as well as in pathology, including cancer and rheumatoid arthritis (PMID: 12948524). CCR6 polymorphism has been associated with rheumatoid arthritis susceptibility and CCR6 is involved in IL-17-driven autoimmunity in human diseases (PMID: 20453841).

## Storage

**Storage:**  
Store at -20°C. Avoid exposure to light. Stable for one year after shipment.  
**Storage Buffer:**  
PBS with 50% Glycerol, 0.05% Proclin300, 0.5% BSA, pH 7.3.  
Aliquoting is unnecessary for -20°C storage

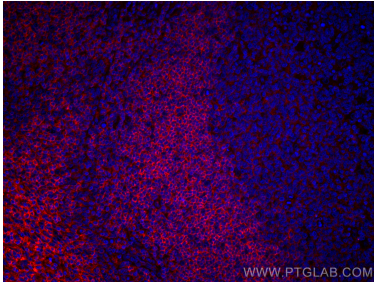
For technical support and original validation data for this product please contact:

T: 4006900926

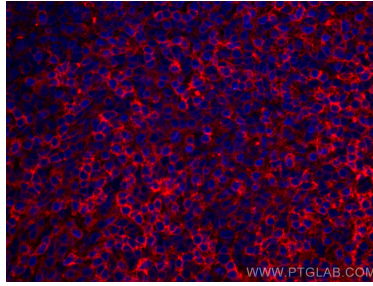
E: [Proteintech-CN@ptglab.com](mailto:Proteintech-CN@ptglab.com)W: [ptgcn.com](http://ptgcn.com)

This product is exclusively available under Proteintech Group brand and is not available to purchase from any other manufacturer.

## Selected Validation Data



Immunofluorescent analysis of (4% PFA) fixed human tonsillitis tissue using CoraLite®594 CCR6 antibody (CL594-66801, Clone: 1C11A9) at dilution of 1:200.



Immunofluorescent analysis of (4% PFA) fixed human tonsillitis tissue using CoraLite®594 CCR6 antibody (CL594-66801, Clone: 1C11A9) at dilution of 1:200.