

CoraLite®594-conjugated Glycophorin A Monoclonal antibody

Catalog Number: **CL594-66778**

Basic Information

Catalog Number:

CL594-66778

Size:

1000 µg/ml

Source:

Mouse

Isotype:

IgG1

Immunogen Catalog Number:

AG8635

GenBank Accession Number:

BC005319

GeneID (NCBI):

2993

UNIPROT ID:

P02724

Full Name:

glycophorin A (MNS blood group)

Calculated MW:

150 aa, 16 kDa

Observed MW:

36-38 kDa

Purification Method:

Protein G purification

CloneNo.:

2B12G10

Recommended Dilutions:

IF-P 1:50-1:500

**Excitation/Emission maxima
wavelengths:**

588 nm / 604 nm

Applications

Tested Applications:

IF-P

Species Specificity:

Human

Positive Controls:

IF-P : human placenta tissue,

Background Information

Glycophorin A (GYPA) is the major transmembrane sialoglycoprotein in erythrocytes. It is a dimeric type I transmembrane protein carrying 15 closely clustered O-linked tetrasaccharides capped with sialic acid/N-acetylneuraminic acid (Neu5Ac). This 36 kDa protein represents the major sialoglycoprotein of the red blood cell membrane displaying about one million copies per cell. (PMID: 9490702)

Storage

Storage:

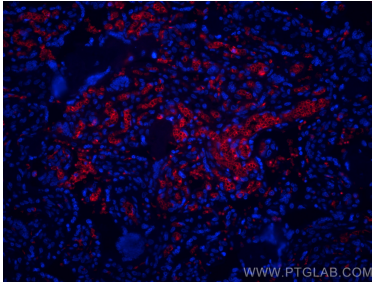
Store at -20°C. Avoid exposure to light.

Storage Buffer:

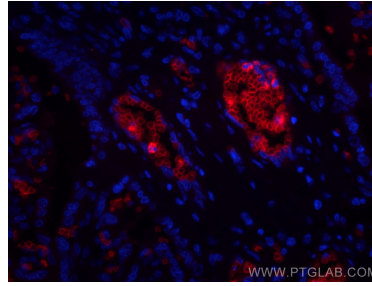
PBS with 50% Glycerol, 0.05% Proclin300, 0.5% BSA, pH 7.3.

Aliquoting is unnecessary for -20°C storage

Selected Validation Data



Immunofluorescent analysis of (4% PFA) fixed human placenta tissue using CoraLite®594 Glycophorin A antibody (CL594-66778, Clone: 2B12G10) at dilution of 1:200.



Immunofluorescent analysis of (4% PFA) fixed human placenta tissue using CoraLite®594 Glycophorin A antibody (CL594-66778, Clone: 2B12G10) at dilution of 1:200.