

CoraLite®594-conjugated RHOA Monoclonal antibody

Catalog Number: **CL594-66733**

Basic Information

Catalog Number: CL594-66733	GenBank Accession Number: BC005976	Purification Method: Protein G purification
Size: 1000 µg/ml	GeneID (NCBI): 387	CloneNo.: 1B3D7
Source: Mouse	UNIPROT ID: P61586	Recommended Dilutions: IF/ICC 1:50-1:500
Isotype: IgG1	Full Name: ras homolog gene family, member A	Excitation/Emission maxima wavelengths: 588 nm / 604 nm
Immunogen Catalog Number: AG1141	Calculated MW: 22 kDa	
	Observed MW: 22 kDa	

Applications

Tested Applications: IF/ICC	Positive Controls: IF/ICC : HeLa cells,
Species Specificity: Human	

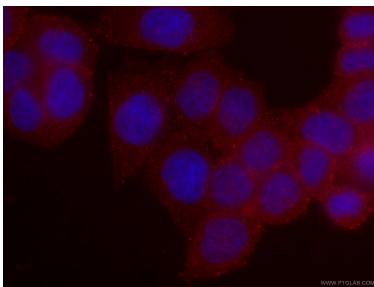
Background Information

RhoA is a member of the Rho family of small GTPases, which cycle between inactive GDP-bound and active GTP-bound states and function as molecular switches in signal transduction cascades. Rho proteins promote reorganization of the actin cytoskeleton and regulate cell shape, attachment, and motility. Overexpression of RhoA is associated with tumor cell proliferation and metastasis. RhoA signalling is critical to many cellular processes including migration, mechanotransduction, and is often disrupted in carcinogenesis.

Storage

Storage:
Store at -20°C. Avoid exposure to light. Stable for one year after shipment.
Storage Buffer:
PBS with 50% Glycerol, 0.05% Proclin300, 0.5% BSA, pH 7.3.
Aliquoting is unnecessary for -20°C storage

Selected Validation Data



Immunofluorescent analysis of (4% PFA) fixed HeLa cells using CL594-66733 (RHOA antibody) at dilution of 1:100.