

# CoraLite®594-conjugated HSPH1 Monoclonal antibody

Catalog Number: **CL594-66723**

## Basic Information

|   |   |  |
|---|---|--|
| Catalog Number:<br><b>CL594-66723</b>       | GenBank Accession Number:<br><b>BC037553</b>            | Purification Method:<br><b>Protein G purification</b>                |
| Size:<br><b>1000 µg/ml</b>                  | GeneID (NCBI):<br><b>10808</b>                          | CloneNo.:<br><b>3H5A5</b>  |
| Source:<br><b>Mouse</b>                     | UNIPROT ID:<br><b>Q92598</b>                            | Recommended Dilutions:<br><b>IF/ICC 1:50-1:500</b>                   |
| Isotype:<br><b>IgG1</b>                     | Full Name:<br><b>heat shock 105kDa/110kDa protein 1</b> | Excitation/Emission maxima<br>wavelengths:<br><b>588 nm / 604 nm</b> |
| Immunogen Catalog Number:<br><b>AG27521</b> | Calculated MW:<br><b>858 aa, 97 kDa</b>                 |  |
|   | Observed MW:<br><b>110 kDa</b>                          |  |

## Applications

|                                       |   |
|---------------------------------------|---|
| Tested Applications:<br><b>IF/ICC</b> | Positive Controls:<br><b>IF/ICC : HeLa cells,</b> |
| Species Specificity:<br><b>Human</b>  |   |

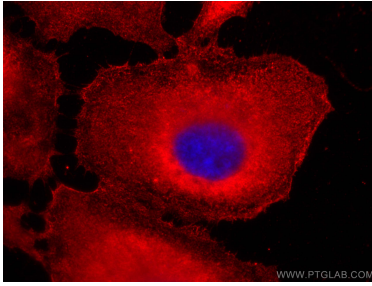
## Background Information

HSP105, also known as HSP110 or HSPH1, belongs to the heat shock protein (HSP) family. Human HSP105 is a high-molecular-weight chaperone protein expressed at constitutively low levels as a cytoplasmic  $\alpha$ -isoform and as an inducible nuclear  $\beta$ -isoform on exposure to various forms of stress. HSP105 is constitutively overexpressed in several solid tumors, including melanoma, breast, thyroid, and gastroenteric cancers, and exerts antiapoptotic functions. Recently HSP105 has been identified as a novel candidate biomarker of lymphoma aggressiveness. Western blot analysis using this antibody detected the phosphorylated protein around 110 kDa in various lysates.

## Storage

**Storage:**  
Store at -20°C. Avoid exposure to light. Stable for one year after shipment.  
**Storage Buffer:**  
PBS with 50% Glycerol, 0.05% Proclin300, 0.5% BSA, pH 7.3.  
**Aliquoting is unnecessary for -20°C storage**

## Selected Validation Data



Immunofluorescent analysis of (-20°C Ethanol) fixed HeLa cells using CoraLite®594 HSPH1 antibody (CL594-66723, Clone: 3H5A5 ) at dilution of 1:200.