

# CoraLite®594-conjugated KU70,XRCC6 Monoclonal antibody

Catalog Number:CL594-66607

## Basic Information

<b>Catalog Number:</b> CL594-66607	<b>GenBank Accession Number:</b> BC008343	<b>Purification Method:</b> Protein G purification
<b>Size:</b> 1000 µg/ml	<b>GeneID (NCBI):</b> 2547	<b>CloneNo.:</b> 3C12D9
<b>Source:</b> Mouse	<b>UNIPROT ID:</b> P12956	<b>Recommended Dilutions:</b> WB 1:500-1:1000 IF/ICC 1:300-1:1200
<b>Isotype:</b> IgG1	<b>Full Name:</b> X-ray repair complementing defective repair in Chinese hamster cells 6	<b>Excitation/Emission maxima wavelengths:</b> 588 nm / 604 nm
<b>Immunogen Catalog Number:</b> AG21301	<b>Calculated MW:</b> 75 kDa	
	<b>Observed MW:</b> 70 kDa	

## Applications

<b>Tested Applications:</b> WB, IF/ICC, FC (Intra)	<b>Positive Controls:</b>
<b>Species Specificity:</b> human, mouse, rat	<b>WB :</b> HEK-293 cells, HeLa cells, Jurkat cells, MCF-7 cells <b>IF/ICC :</b> HeLa cells, HepG2 cells

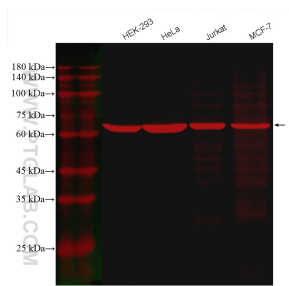
## Background Information

X-ray repair cross-complementing protein 6(XRCC6)gene encodes subunit p70 of the p70/p80 autoantigen which has a role in DNA repair or transposition. DNA helicase II complex binds preferentially to fork-like ends of double-stranded DNA in a cell cycle-dependent manner, which may be mediated by XRCC6. XRCC6/5 can form a heterodimer, which function as a regulatory subunit of the DNA-dependent protein kinase complex DNA-PK by increasing the affinity of the catalytic subunit PRKDC to DNA, and also it can stabilize broken DNA ends and bringing them together. Otherwise, XRCC5/6 heterodimer together with APEX1 can negatively regulate of transcription.

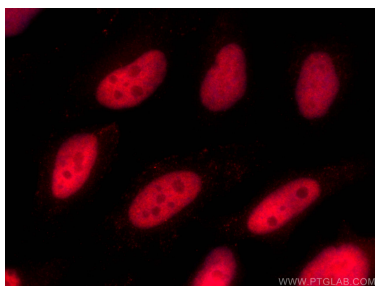
## Storage

**Storage:**  
Store at -20°C. Avoid exposure to light. Stable for one year after shipment.  
**Storage Buffer:**  
PBS with 50% Glycerol, 0.05% Proclin300, 0.5% BSA, pH 7.3.  
Aliquoting is unnecessary for -20°C storage

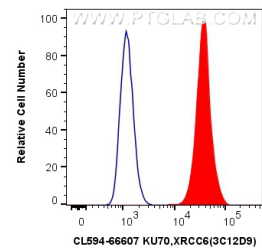
## Selected Validation Data



Various lysates were subjected to SDS PAGE followed by western blot with CL594-66607 (KU70,XRCC6 antibody) at dilution of 1:500 incubated at room temperature for 1.5 hours.



Immunofluorescent analysis of (4% PFA) fixed HeLa cells using CoraLite®594 KU70,XRCC6 antibody (CL594-66607, Clone: 3C12D9) at dilution of 1:600.



1X10<sup>6</sup> HepG2 cells were intracellularly stained with 0.4 ug CoraLite®594 Anti-Human KU70,XRCC6 (CL594-66607, Clone:3C12D9) (red), or 0.4 ug CoraLite®594 Mouse IgG1 Isotype Control (MOPC-21) (CL594-65124, Clone: MOPC-21) (blue). Cells were fixed and permeabilized with Transcription Factor Staining Buffer Kit (PF00011).