

For Research Use Only

CoraLite®594-conjugated PALLD,palladin Monoclonal antibody



Catalog Number:CL594-66601

Basic Information

Catalog Number:

CL594-66601

Size:

1000 µg/ml

Source:

Mouse

Isotype:

IgG2a

Immunogen Catalog Number:

AG1288

GenBank Accession Number:

BC013867

GeneID (NCBI):

23022

UNIPROT ID:

Q8WX93

Full Name:

palladin, cytoskeletal associated protein

Calculated MW:

1383 aa, 151 kDa

Observed MW:

151 kDa

Purification Method:

Protein A purification

CloneNo.:

2A1F6

Recommended Dilutions:

IF-P 1:50-1:500

Excitation/Emission maxima wavelengths:

588 nm / 604 nm

Applications

Tested Applications:

IF-P

Species Specificity:

Human, rat, pig

Positive Controls:

IF-P: mouse testis tissue,

Background Information

Storage

Storage:

Store at -20°C. Avoid exposure to light. Stable for one year after shipment.

Storage Buffer:

PBS with 50% Glycerol, 0.05% Proclin300, 0.5% BSA, pH 7.3.

Aliquoting is unnecessary for -20°C storage

For technical support and original validation data for this product please contact:

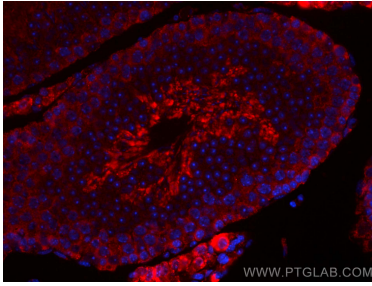
T: 4006900926

E: Proteintech-CN@ptglab.com

W: ptgcn.com

This product is exclusively available under Proteintech Group brand and is not available to purchase from any other manufacturer.

Selected Validation Data



Immunofluorescent analysis of (4% PFA) fixed mouse testis tissue using CoraLite®594 PALLD,palladin antibody (CL594-66601, Clone: 2A1F6) at dilution of 1:200.