

For Research Use Only

CoraLite®594-conjugated ATPB Monoclonal antibody

Catalog Number: CL594-66600

1 Publications



Basic Information

Catalog Number:

CL594-66600

Size:

1000 µg/ml

Source:

Mouse

Isotype:

IgG2b

Immunogen Catalog Number:

AG11177

GenBank Accession Number:

BC016512

GeneID (NCBI):

506

UNIPROT ID:

P06576

Full Name:

ATP synthase, H⁺ transporting, mitochondrial F1 complex, beta polypeptide

Calculated MW:

529 aa, 57 kDa

Observed MW:

45-57 kDa

Purification Method:

Protein A purification

CloneNo.:

1A11B9

Recommended Dilutions:

IF/ICC 1:50-1:500

Excitation/Emission maxima wavelengths:

588 nm / 604 nm

Applications

Tested Applications:

IF/ICC, FC (Intra)

Cited Applications:

IF

Species Specificity:

human, mouse, rat

Positive Controls:

IF/ICC : HepG2 cells,

Background Information

ATP5B, also named as ATPMB and ATPSB, belongs to the ATPase alpha/beta chains family. It is a high affinity HDL receptor for apolipoprotein A1. ATP5B is a subunit of mitochondrial ATP synthase (F1F0 ATP synthase or Complex V). ATP5B has a calculated molecular mass of 57 kDa and ~5 kDa transit peptide can be removed in the mature form.

Notable Publications

Author	Pubmed ID	Journal	Application
Chenghao Wen	39071907	Exp Ther Med	IF

Storage

Storage:

Store at -20°C. Avoid exposure to light. Stable for one year after shipment.

Storage Buffer:

PBS with 50% Glycerol, 0.05% Proclin300, 0.5% BSA, pH 7.3.

Aliquoting is unnecessary for -20°C storage

For technical support and original validation data for this product please contact:

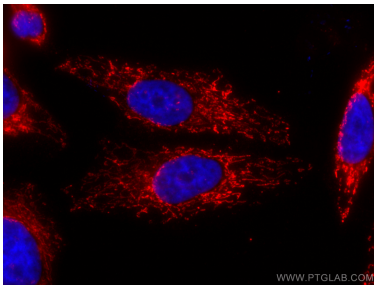
T: 4006900926

E: Proteintech-CN@ptglab.com

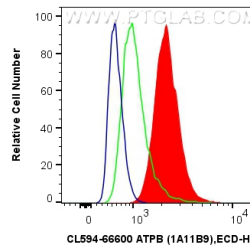
W: ptgcn.com

This product is exclusively available under Proteintech Group brand and is not available to purchase from any other manufacturer.

Selected Validation Data



Immunofluorescent analysis of (4% PFA) fixed HepG2 cells using Coralite®594 ATPB antibody (CL594-66600, Clone: 1A11B9) at dilution of 1:200.



1X10⁶ HepG2 cells were intracellularly stained with 0.8 ug Coralite®594 Anti-Human ATPB (CL594-66600, Clone:1A11B9) (red), or 0.8 ug Coralite®594 Mouse IgG2b Isotype Control (MPC-11) (CL594-65128, Clone: MPC-11) (blue). Cells were fixed with 4% PFA and permeabilized with Flow Cytometry Perm Buffer (PF00011-C).