

For Research Use Only

# CoraLite®594-conjugated CHCHD6 Monoclonal antibody

Catalog Number:CL594-66597



## Basic Information

Catalog Number:

CL594-66597

Size:

1000 ug/ml

Source:

Mouse

Isotype:

IgG2a

Immunogen Catalog Number:

AG14700

GenBank Accession Number:

BC006123

GeneID (NCBI):

84303

UNIPROT ID:

Q9BRQ6

Full Name:

coiled-coil-helix-coiled-coil-helix domain containing 6

Calculated MW:

235 aa, 26 kDa

Observed MW:

26-29 kDa

Purification Method:

Protein A purification

CloneNo.:

2A11E9

Recommended Dilutions:

IF/ICC 1:200-1:800

Excitation/Emission maxima wavelengths:

588 nm / 604 nm

## Applications

Tested Applications:

IF/ICC, FC (Intra)

Species Specificity:

human

Positive Controls:

IF/ICC : MCF-7 cells,

## Background Information

### Storage

Storage:

Store at -20°C. Avoid exposure to light. Stable for one year after shipment.

Storage Buffer:

PBS with 50% Glycerol, 0.05% Proclin300, 0.5% BSA, pH 7.3.

Aliquoting is unnecessary for -20°C storage

For technical support and original validation data for this product please contact:

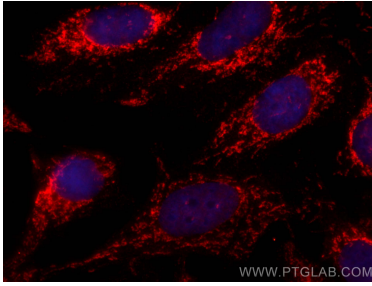
T: 4006900926

E: [Proteintech-CN@ptglab.com](mailto:Proteintech-CN@ptglab.com)

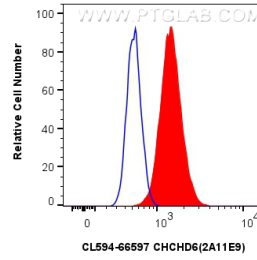
W: [ptgcn.com](http://ptgcn.com)

This product is exclusively available under Proteintech Group brand and is not available to purchase from any other manufacturer.

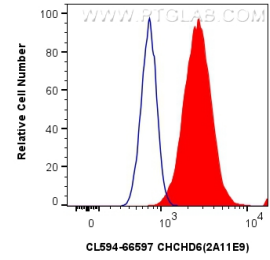
## Selected Validation Data



Immunofluorescent analysis of (4% PFA) fixed MCF-7 cells using CoraLite®594 CHCHD6 antibody (CL594-66597, Clone: 2A11E9) at dilution of 1:400.



1x10<sup>6</sup> A431 cells were intracellularly stained with 0.4 ug CoraLite®594-conjugated CHCHD6 Monoclonal antibody (CL594-66597, Clone:2A11E9) (red), or 0.4 ug CoraLite®594 Mouse IgG2a isotype control (11A1B2) (CL594-66360-2, Clone: 11A1B2) (blue). Cells were fixed with 4% PFA and permeabilized with Flow Cytometry Perm Buffer (PF00011-C).



1x10<sup>6</sup> MCF-7 cells were intracellularly stained with 0.4 ug CoraLite®594-conjugated CHCHD6 Monoclonal antibody (CL594-66597, Clone:2A11E9) (red), or 0.4 ug CoraLite®594 Mouse IgG2a isotype control (11A1B2) (CL594-66360-2, Clone: 11A1B2) (blue). Cells were fixed with 4% PFA and permeabilized with Flow Cytometry Perm Buffer (PF00011-C).