

For Research Use Only

CoraLite®594-conjugated PHD2/EGLN1 Monoclonal antibody

Catalog Number: CL594-66589

Featured Product



Basic Information

Catalog Number:

CL594-66589

Size:

1000 ug/ml

Source:

Mouse

Isotype:

IgG1

GenBank Accession Number:

NM_022051

GeneID (NCBI):

54583

UNIPROT ID:

Q9GZT9

Full Name:

egl nine homolog 1 (C. elegans)

Calculated MW:

46 kDa

Purification Method:

Protein G purification

CloneNo.:

1A2F1

Recommended Dilutions:

IF/ICC 1:50-1:500

Excitation/Emission maxima
wavelengths:

588 nm / 604 nm

Applications

Tested Applications:

IF/ICC

Species Specificity:

human, mouse, rat, pig

Positive Controls:

IF/ICC : HEK-293 cells,

Background Information

EGLN1, also named as PHD2, SM-20, HPH-2 and HIF-PH2, catalyzes the post-translational formation of 4-hydroxyproline in hypoxia-inducible factor (HIF) alpha proteins. It hydroxylates HIF-1 alpha at 'Pro-402' and 'Pro-564', and HIF-2 alpha. EGLN1 functions as a cellular oxygen sensor and, under normoxic conditions, targets HIF through the hydroxylation for proteasomal degradation via the von Hippel-Lindau ubiquitination complex. Defects in EGLN1 are the cause of erythrocytosis familial type 3 (ECYT3). EGLN1 has 3 isoforms with MW of 46 kDa, 44 kDa and 36 kDa produced by alternative splicing. It mainly localizes in cytoplasm and can shuttle between the nucleus and cytoplasm (PubMed:19631610). The antibody is specific to EGLN1.

Storage

Storage:

Store at -20°C. Avoid exposure to light. Stable for one year after shipment.

Storage Buffer:

PBS with 50% Glycerol, 0.05% Proclin300, 0.5% BSA, pH 7.3.

Aliquoting is unnecessary for -20°C storage

For technical support and original validation data for this product please contact:

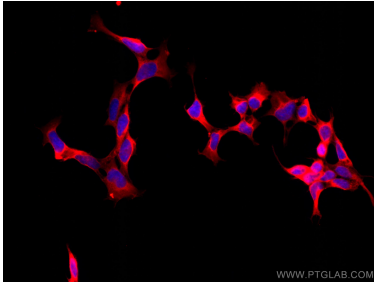
T: 4006900926

E: Proteintech-CN@ptglab.com

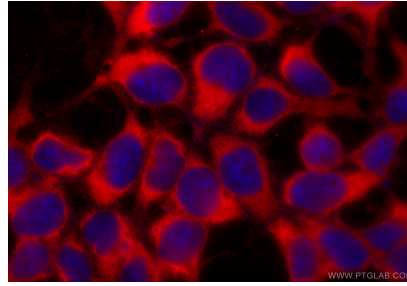
W: ptgcn.com

This product is exclusively available under Proteintech Group brand and is not available to purchase from any other manufacturer.

Selected Validation Data



Immunofluorescent analysis of (4% PFA) fixed HEK-293 cells using Coralite® 594 PHD2/EGLN1 antibody (CL594-66589, Clone: 1A2F1) at dilution of 1:200.



Immunofluorescent analysis of (-20°C Ethanol) fixed HEK-293 cells using Coralite® 594 PHD2/EGLN1 antibody (CL594-66589, Clone: 1A2F1) at dilution of 1:200.