

For Research Use Only

# CoraLite®594-conjugated WBP2 Monoclonal antibody



Catalog Number:CL594-66585

Featured Product

## Basic Information

Catalog Number:

CL594-66585

Size:

1000 µg/ml

Source:

Mouse

Isotype:

IgG1

Immunogen Catalog Number:

AG2661

GenBank Accession Number:

BC010616

GeneID (NCBI):

23558

UNIPROT ID:

Q969T9

Full Name:

WW domain binding protein 2

Calculated MW:

261 aa, 28 kDa

Observed MW:

30-40 kDa

Purification Method:

Protein G purification

CloneNo.:

2B4G7

Recommended Dilutions:

IF/ICC 1:50-1:500

Excitation/Emission maxima  
wavelengths:

588 nm / 604 nm

## Applications

Tested Applications:

IF/ICC

Species Specificity:

Human

Positive Controls:

IF/ICC : HeLa cells,

## Background Information

### Storage

Storage:

Store at -20°C. Avoid exposure to light.

Storage Buffer:

PBS with 50% Glycerol, 0.05% Proclin300, 0.5% BSA, pH 7.3.

Aliquoting is unnecessary for -20°C storage

For technical support and original validation data for this product please contact:

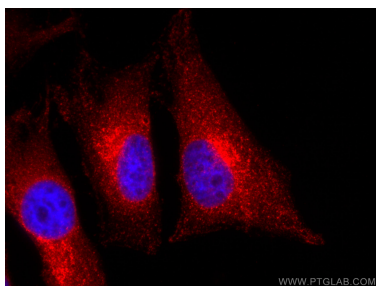
T: 4006900926

E: [Proteintech-CN@ptglab.com](mailto:Proteintech-CN@ptglab.com)

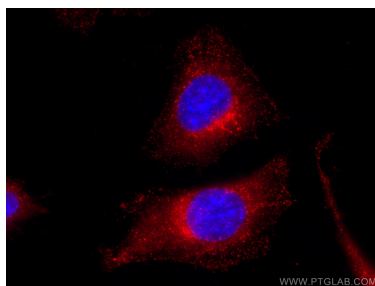
W: [ptgcn.com](http://ptgcn.com)

This product is exclusively available under Proteintech Group brand and is not available to purchase from any other manufacturer.

## Selected Validation Data



Immunofluorescent analysis of (4% PFA) fixed HeLa cells using Coralite®594 WBP2 antibody (CL594-66585, Clone: 2B4G7 ) at dilution of 1:200.



Immunofluorescent analysis of (-20°C Ethanol) fixed HeLa cells using Coralite®594 WBP2 antibody (CL594-66585, Clone: 2B4G7 ) at dilution of 1:200.