

For Research Use Only

CoraLite®594-conjugated HuR/ELAVL1 Monoclonal antibody



Catalog Number:CL594-66549

Basic Information

Catalog Number: CL594-66549	GenBank Accession Number: BC003376	Purification Method: Protein A purification
Size: 1000 µg/ml	GeneID (NCBI): 1994	CloneNo.: 1A11H2
Source: Mouse	UNIPROT ID: Q15717	Recommended Dilutions: IF/ICC 1:50-1:500
Isotype: IgG2a	Full Name: ELAV (embryonic lethal, abnormal vision, Drosophila)-like 1 (Hu antigen 588 nm / 604 nm R)	Excitation/Emission maxima wavelengths:
Immunogen Catalog Number: AG2249	Calculated MW: 326 aa, 36 kDa	
	Observed MW: 37 kDa	

Applications

Tested Applications: IF/ICC	Positive Controls:
Species Specificity: Human, mouse, rat	IF/ICC : L02 cells,

Background Information

ELAVL1, also named as HUR, belongs to the RRM elav family. It is involved in 3'-UTR ARE-mediated MYC stabilization. ELAVL1 binds avidly to the AU-rich element in FOS and IL3/interleukin-3 mRNAs. In the case of the FOS AU-rich element, ELAVL1 binds to a core element of 27 nucleotides that contain AUUUUA, AUUUUA and AUUUUUUA motifs.

Storage

Storage:
Store at -20°C. Avoid exposure to light. Stable for one year after shipment.
Storage Buffer:
PBS with 50% Glycerol, 0.05% Proclin300, 0.5% BSA, pH 7.3.
Aliquoting is unnecessary for -20°C storage

For technical support and original validation data for this product please contact:

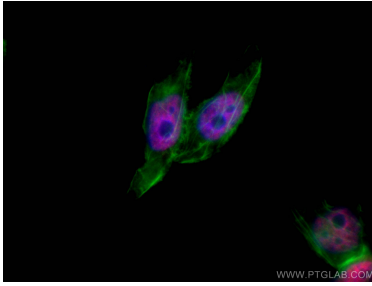
T: 4006900926

E: Proteintech-CN@ptglab.com

W: ptgcn.com

This product is exclusively available under Proteintech Group brand and is not available to purchase from any other manufacturer.

Selected Validation Data



Immunofluorescent analysis of (4% PFA) fixed L02 cells using CoraLite® 594-conjugated HuR/ELAVL1 antibody (CL594-66549, Clone: 1A11H2) at dilution of 1:100, CL488-Phalloidin (green).