

CoraLite®594-conjugated TWIST2 Monoclonal antibody

Catalog Number: **CL594-66544**

Basic Information

Catalog Number:

CL594-66544

Size:

1000 µg/ml

Source:

Mouse

Isotype:

IgG1

Immunogen Catalog Number:

AG2348

GenBank Accession Number:

BC033168

GeneID (NCBI):

117581

UNIPROT ID:

Q8WVJ9

Full Name:

twist homolog 2 (Drosophila)

Calculated MW:

160 aa, 18 kDa

Observed MW:

22 kDa

Purification Method:

Protein G purification

CloneNo.:

1B12D11

Recommended Dilutions:

IF/ICC 1:50-1:500

**Excitation/Emission maxima
wavelengths:**

588 nm / 604 nm

Applications

Tested Applications:

IF/ICC, FC (Intra)

Species Specificity:

human, mouse, rat

Positive Controls:

IF/ICC : HepG2 cells,

Background Information

TWIST2, also named as BHLHA39 and Dermo1, is a basic helix-loop-helix protein which acts as a transcriptional regulator, plays a central role in differentiation of mesodermal during embryogenesis. TWIST2 inhibits the premature or ectopic differentiation of preosteoblast cells during osteogenesis, possibly by changing the internal signal transduction response of osteoblasts to external growth factors. It is also implicated in tumorigenesis, invasion and metastasis. TWIST2 forms both homodimers (45KD) and heterodimers with E2A E proteins, and dimer partner selection is a critical mediator of TWIST function. (PMID:14724576, 16502419).

Storage

Storage:

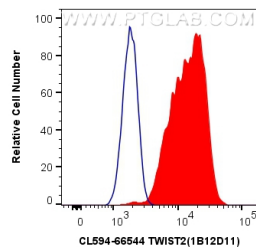
Store at -20°C. Avoid exposure to light. Stable for one year after shipment.

Storage Buffer:

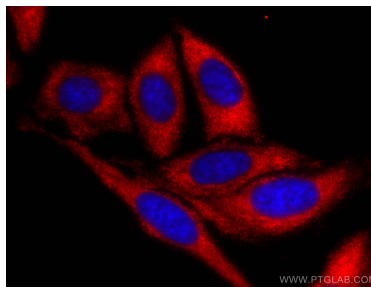
PBS with 50% Glycerol, 0.05% Proclin300, 0.5% BSA, pH 7.3.

Aliquoting is unnecessary for -20°C storage

Selected Validation Data



1×10^6 HeLa cells were intracellularly stained with 0.4 μ g CoraLite®594 Anti-Human TWIST2 (CL594-66544, Clone:1B12D11) (red), or 0.4 μ g Control Antibody. Cells were fixed with 4% PFA and permeabilized with Flow Cytometry Perm Buffer (PF00011-C).



Immunofluorescent analysis of (-20°C Ethanol) fixed HepG2 cells using CoraLite®594 TWIST2 antibody (CL594-66544, Clone: 1B12D11) at dilution of 1:200.