

For Research Use Only

# CoraLite®594-conjugated MFF Monoclonal antibody



Catalog Number: **CL594-66527**

## Basic Information

Catalog Number: CL594-66527	GenBank Accession Number: BC000797	Purification Method: Protein G purification
Size: 1000 µg/ml	GeneID (NCBI): 56947	CloneNo.: 1G4B12
Source: Mouse	UNIPROT ID: Q9GZY8	Recommended Dilutions: IF-P 1:50-1:500
Isotype: IgG1	Full Name: mitochondrial fission factor	Excitation/Emission maxima wavelengths: 588 nm / 604 nm
Immunogen Catalog Number: AG9990	Calculated MW: 38 kDa	

## Applications

Tested Applications: IF-P	Positive Controls: IF-P : mouse brain tissue,
Species Specificity: Human, pig, rat, mouse	

## Background Information

MFF (mitochondrial fission factor) is a mitochondrial outer membrane protein that is involved in mitochondrial localization of Drp1 and mitochondrial fission. Multiple isoforms of MFF exist due to the alternative splicing. This antibody recognizes the endogenous MFF protein around 26-29 kDa and 35-38 kDa.

## Storage

**Storage:**  
Store at -20°C. Avoid exposure to light.  
**Storage Buffer:**  
PBS with 50% Glycerol, 0.05% Proclin300, 0.5% BSA, pH 7.3.  
**Aliquoting is unnecessary for -20°C storage**

For technical support and original validation data for this product please contact:

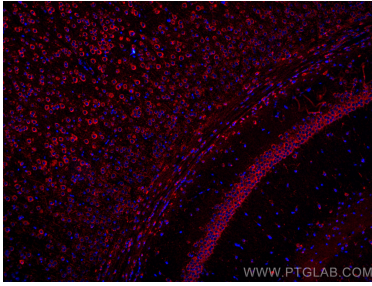
T: 4006900926

E: [Proteintech-CN@ptglab.com](mailto:Proteintech-CN@ptglab.com)

W: [ptgcn.com](http://ptgcn.com)

**This product is exclusively available under Proteintech Group brand and is not available to purchase from any other manufacturer.**

## Selected Validation Data



Immunofluorescent analysis of (4% PFA) fixed mouse brain tissue using CoraLite® 594 MFF antibody (CL594-66527, Clone: 1G4B12 ) at dilution of 1:200.