

CoraLite®594-conjugated GABARAPL1 Monoclonal antibody

Catalog Number: **CL594-66458**

Basic Information

Catalog Number: CL594-66458	GenBank Accession Number: BC009309	Purification Method: Protein G purification
Size: 1000 µg/ml	GeneID (NCBI): 23710	CloneNo.: 1E10F6
Source: Mouse	UNIPROT ID: Q9HOR8	Recommended Dilutions: IF/ICC 1:50-1:500
Isotype: IgG1	Full Name: GABA(A) receptor-associated protein like 1	Excitation/Emission maxima wavelengths: 588 nm / 604 nm
Immunogen Catalog Number: AG1473	Calculated MW: 14 kDa	
	Observed MW: 16-18 kDa	

Applications

Tested Applications: IF/ICC	Positive Controls: IF/ICC : HepG2 cells,
Species Specificity: human, mouse, rat, pig	

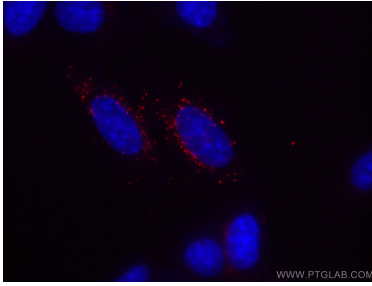
Background Information

GABARAPL1 (GABARAP-like protein 1), also named as ATG8, GEC1, APG8L, ATG8L and APG8-LIKE, is a member of GABARP (GABAA receptor-associated protein) family. GABARAPL1 was initially identified as estrogen-regulated gene and the protein acts in receptor and vesicle transport. It's also involved in the process of autophagy like GABARAP and GABARAPL2, and may be considered as an autophagic marker. It is expressed at very high levels in the brain, heart, peripheral blood leukocytes, liver, kidney, placenta and skeletal muscle and at very low levels in thymus and small intestine.

Storage

Storage:
Store at -20°C. Avoid exposure to light.
Storage Buffer:
PBS with 50% Glycerol, 0.05% Proclin300, 0.5% BSA, pH 7.3.
Aliquoting is unnecessary for -20°C storage

Selected Validation Data



Immunofluorescent analysis of (-20°C Ethanol) fixed HepG2 cells using CoraLite®594 GABARAPL1 antibody (CL594-66458, Clone: 1E10F6) at dilution of 1:200. DAPI (blue).