

CoraLite®594-conjugated PKC Alpha Monoclonal antibody

Catalog Number: **CL594-66421**

Basic Information

Catalog Number:

CL594-66421

Size:

857 µg/ml

Source:

Mouse

Isotype:

IgG1

Immunogen Catalog Number:

AG17275

GenBank Accession Number:

BC109274

GeneID (NCBI):

5578

UNIPROT ID:

P17252

Full Name:

protein kinase C, alpha

Observed MW:

77 kDa

Purification Method:

Protein G purification

CloneNo.:

1D11F4

Recommended Dilutions:

IF/ICC 1:50-1:500

Excitation/Emission maxima wavelengths:

588 nm / 604 nm

Applications

Tested Applications:

IF/ICC

Species Specificity:

human, mouse, rat

Positive Controls:

IF/ICC : HeLa cells,

Background Information

Protein kinase C (PKC) is a family of serine- and threonine-specific protein kinases that can be activated by calcium and the second messenger diacylglycerol. PKC family members phosphorylate a wide variety of protein targets and are known to be involved in diverse cellular signaling pathways. PKC family members also serve as major receptors for phorbol esters, a class of tumor promoters. Each member of the PKC family has a specific expression profile and is believed to play a distinct role in cells. PRKCA is one of the PKC family members. This kinase has been reported to play roles in many different cellular processes, such as cell adhesion, cell transformation, cell cycle checkpoint, and cell volume control. Knockout studies in mice suggest that this kinase may be a fundamental regulator of cardiac contractility and Ca(2+) handling in myocytes.

Storage

Storage:

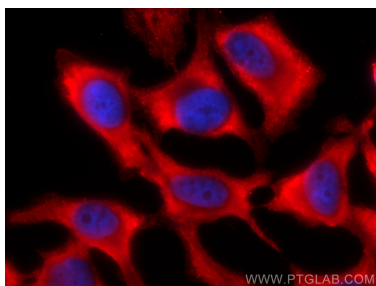
Store at -20°C. Avoid exposure to light. Stable for one year after shipment.

Storage Buffer:

PBS with 50% Glycerol, 0.05% Proclin300, 0.5% BSA, pH 7.3.

Aliquoting is unnecessary for -20°C storage

Selected Validation Data



Immunofluorescent analysis of (-20°C Ethanol) fixed HeLa cells using CoraLite®594 PKC Alpha antibody (CL594-66421, Clone: 1D11F4) at dilution of 1:200.