

CoraLite®594-conjugated PADI2 Monoclonal antibody

Catalog Number: **CL594-66386**

Basic Information

Catalog Number:

CL594-66386

Size:

818 µg/ml

Source:

Mouse

Isotype:

IgG2b

Immunogen Catalog Number:

AG17612

GenBank Accession Number:

BC009701

GeneID (NCBI):

11240

UNIPROT ID:

Q9Y2J8

Full Name:

peptidyl arginine deiminase, type II

Calculated MW:

665 aa, 75 kDa

Purification Method:

Protein A purification

CloneNo.:

2D8C12

Recommended Dilutions:

IF-P 1:50-1:500

IF/ICC 1:50-1:500

Excitation/Emission maxima wavelengths:

588 nm / 604 nm

Applications

Tested Applications:

IF-P, FC (Intra)

Species Specificity:

human, mouse, rat

Positive Controls:

IF-P : human breast cancer tissue, HeLa cells

IF/ICC : HeLa cells,

Background Information

PADI2, also named as KIAA0994, PDI2, PAD-H19, and PAD2(Peptidylarginine deiminase II), belongs to the protein arginine deiminase family. It catalyzes the deimination of arginine residues of proteins. PADI2 may play a regulatory role in the expression of lactation-related genes via histone citrullination during diestrus (PMID:20668670). PADI2 has two isoforms with MW 75 kDa and 49 kDa. This antibody is conjugated with CL594, Ex/Em 593 nm/614 nm.

Storage

Storage:

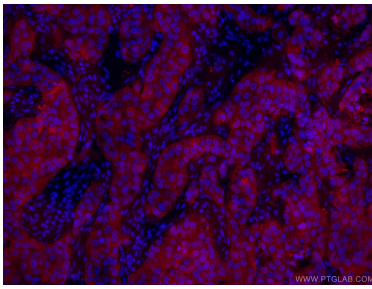
Store at -20°C. Avoid exposure to light. Stable for one year after shipment.

Storage Buffer:

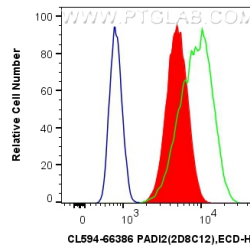
PBS with 50% Glycerol, 0.05% Proclin300, 0.5% BSA, pH 7.3.

Aliquoting is unnecessary for -20°C storage

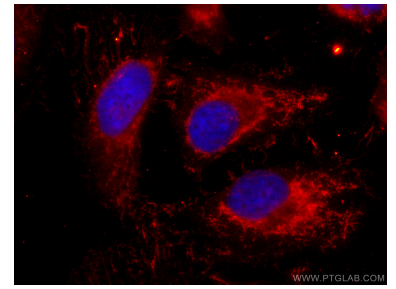
Selected Validation Data



Immunofluorescent analysis of (4% PFA) fixed human breast cancer tissue using CL594-66386 (PADI2 antibody) at dilution of 1:50.



1X10⁶ HeLa cells were intracellularly stained with 0.8 ug CoraLite®594 Anti-Human PADI2 (CL594-66386, Clone:2D8C12) (red), or 0.8 ug CoraLite®594 Mouse IgG2b Isotype Control (MPC-11) (CL594-65128, Clone: MPC-11) (blue). Cells were fixed with 4% PFA and permeabilized with Flow Cytometry Perm Buffer (PF00011-C).



Immunofluorescent analysis of (-20°C Ethanol) fixed HeLa cells using CoraLite®594 PADI2 antibody (CL594-66386, Clone: 2D8C12) at dilution of 1:200.