

For Research Use Only

CoraLite®594-conjugated PGRMC1 Monoclonal antibody



Catalog Number: CL594-66372

Featured Product

Basic Information

Catalog Number:

CL594-66372

Size:

1000 µg/ml

Source:

Mouse

Isotype:

IgG1

Immunogen Catalog Number:

AG3643

GenBank Accession Number:

BC034238

GeneID (NCBI):

10857

UNIPROT ID:

O00264

Full Name:

progesterone receptor membrane component 1

Calculated MW:

195 aa, 22 kDa

Observed MW:

25-27 kDa

Purification Method:

Protein G purification

CloneNo.:

1C10D11

Recommended Dilutions:

IF 1:50-1:500

Excitation/Emission maxima
wavelengths:

588 nm / 604 nm

Applications

Tested Applications:

IF-P

Species Specificity:

human, mouse, rat, pig

Positive Controls:

IF : human ovary tumor tissue,

Background Information

Progesterone receptor membrane component 1 (PGRMC1) is a member of a multi-protein progesterone-binding complex. However, PGRMC1 shares homology with cytochrome b5-related proteins rather than hormone receptors (PMID: 18992768). It is a heme binding protein with binding sites for Src homology (SH2) and SH3 domain-containing proteins (PMID: 17583495). PGRMC1 is overexpressed in a variety of cancers, and thus represents an important biomarker for cancer progression and a potential target for anticancer drugs (PMID: 21730960). In nonmalignant tissues, PGRMC1 is highly expressed in the liver and kidney (PMID: 9705155; 20164297).

Storage

Storage:

Store at -20°C. Avoid exposure to light.

Storage Buffer:

PBS with 50% Glycerol, 0.05% Proclin300, 0.5% BSA, pH 7.3.

Aliquoting is unnecessary for -20°C storage

For technical support and original validation data for this product please contact:

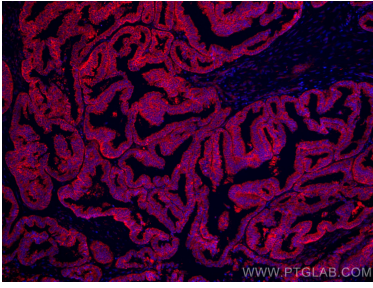
T: 4006900926

E: Proteintech-CN@ptglab.com

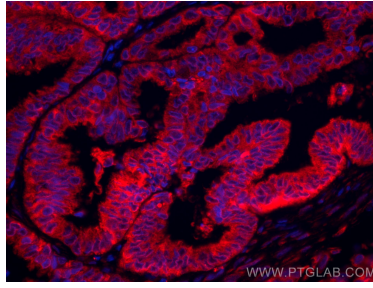
W: ptgcn.com

This product is exclusively available under Proteintech Group brand and is not available to purchase from any other manufacturer.

Selected Validation Data



Immunofluorescent analysis of (4% PFA) fixed human ovary tumor tissue using CoraLite@594 PGRMC1 antibody (CL594-66372, Clone: 1C10D11) at dilution of 1:200.



Immunofluorescent analysis of (4% PFA) fixed human ovary tumor tissue using CoraLite@594 PGRMC1 antibody (CL594-66372, Clone: 1C10D11) at dilution of 1:200.